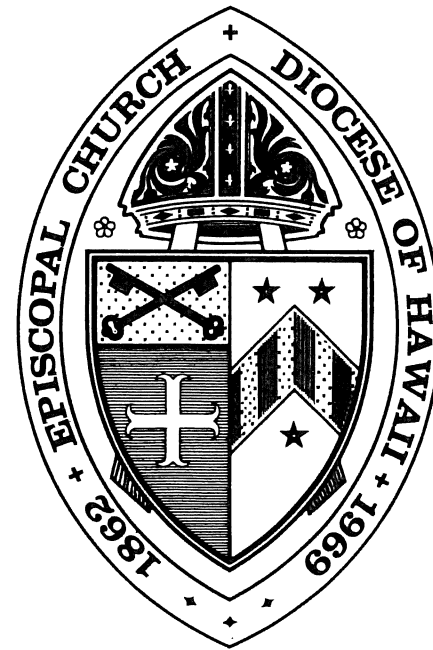


1975

THE EPISCOPAL CHURCH IN HAWAII

(DIOCESE OF HAWAII)



DIOCESE OF HAWAII
(Province VIII)

Diocesan Office: Queen Emma Square, Honolulu, HI 96813
Telephone (808) 536-7776 Cable PECUSAM

HISTORICALLY, Hawaii's first contact with Christianity came through the Church of England with the arrival of Captain James Cook. Later, in 1862, at the request of King Kamehameha IV (Alexander Liholiho) and his energetic Queen, Emma Naea, the Church of England sent its first bishop, the Rt. Rev. Thomas N. Staley. Thus, the Episcopal Church has the distinction of being in Hawaii by invitation.

In 1902, the Anglican Church in Hawaii was constituted a Missionary District of P.E.C.U.S.A. The Ven. Henry B. Restarick was elected the first American Bishop to Hawaii.

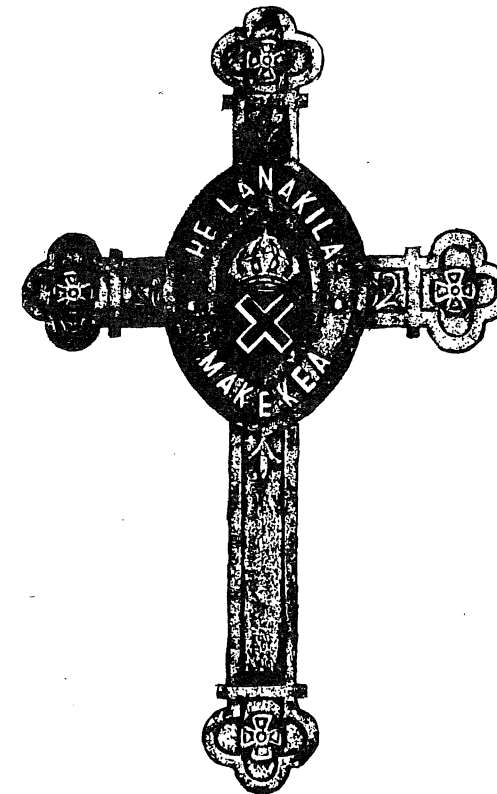
An honor was conferred upon the Church, under the Bishopric of The Rt. Rev. Harry S. Kennedy, when it was asked to host the 58th General Convention in September 1955. This was the first General Convention to be held in an Overseas Mission Field, and also the largest to gather in Honolulu. Among matters considered at that Convention, was the approval of Statehood for the Territory of Hawaii.

On October 24, 1969, at the Primary Convention of the Episcopal Church in Hawaii, clergy and delegates gathered, and for the first time in the Church's Island history elected their own bishop. As their Chief Pastor, a native son was chosen — The Rt. Rev. E. Lani Hanchett, the first of Hawaiian ancestry to become priest and bishop.

On Monday morning August 11, 1975, our beloved Bishop Hanchett died of cancer at the age of 55.

After much preparation and planning, a Special Convention to elect the next Diocesan is scheduled for the weekend of April 30, 1976.

JOURNAL
of
THE 7th ANNUAL DIOCESAN CONVENTION
of
THE EPISCOPAL CHURCH IN HAWAII
(DIOCESE OF HAWAII)



held at
St. Andrew's Cathedral
and
St. Andrew's Priory School, Honolulu

October 17-19, 1975

t a b l e o f c o n t e n t s

the Diocese, a brief history	inside front cover
members: the Standing Committee, Board of Directors	p. 1
members: the Interim Management Committee	p. 2
proceedings of the 7th Convention (10/17-19)	pp. 3-9
resolutions, a listing	p. 5
treasurer's report	p. 6
necrology	pp. 10-11
appointments	pp. 12-13
elected	p. 14
resolutions	pp. 15-23
sermon on Bishop Hanchett	pp. (23) 24-30
photo essay on Bishop Hanchett	pp. 31-36
statistical report	p. 37
official clergy list	pp. 38-43
.....	
parochial report	p. 44
financial statistics	p. 45
assessment & quota, 1975	p. 46
operating budget	p. 47
assessment & quota, 1976	p. 48
proposed budget, 1976	p. 49
giving for work outside parish	p. 50
auditors' report; balance sheet	pp. 51-56
trust investments; trust endowments	pp. 57-62
special investments	p. 63
.....	
organization; directory of the church	p. 64
Aloha!	inside back cover
date of next meeting	

This was the Cross used for the 59th General Convention of the Episcopal Church when it met in Honolulu in September 1955. The Hawaiian Words, "He Lanakila Ma Ke Kea," symbolize the cross and crown, and mean "Victory through Suffering" or "Victory through the Cross." This motto was adopted by the first Anglican Bishop for the Church in Hawaii, The Rt. Rev. Thomas N. Staley.

STANDING COMMITTEE

(dates indicate expiration of term)

* The Rev. Eugene L. Harshman, President 11/79
Mr. Euclid D.Y. Lee, Secretary 11/76

The Rev. William R. Grosh 11/78
The Rev. Fred G. Minuth 11/77
The Rev. Thomas K. Yoshida 11/76

* Mrs. Richard (Jan) Bond 11/79
Mr. Arthur Awai 11/78
Mr. Paul Franklin Weaver 11/77

* BOARD OF DIRECTORS

(terms expire 11/76)

The Rev. David K. Kennedy, President
Mr. Nathaniel R. Potter, Jr., Vice President
Mr. Hugh Shearer, Secretary
Mr. Henry F. Budd, Treasurer

Finance Committee:

The Rev. Rudolph A. Duncan, chm.

The Rev. Charles T. Crane

Dr. Thomas G. Cahill
Dr. Moheb Amin Ghali
Mr. John A. Lockwood
Mr. John A. Newcomer
Mr. Nathaniel R. Potter, Jr.

Program Committee:

Mrs. Colin C. (Margaret) Cameron, chm.

The Rev. Charles S. Burger

Mr. William R. Chillingworth
Mrs. William R. (Frances) Grosh
Mrs. Richard (Ray Elizabeth) Herkner
Mr. Robert A. Merriam

Real Estate Committee:

Mr. Nathaniel R. Potter, Jr., chm.

Mr. William D. Balfour
Mr. James W. Lovell
Mr. Hugh Shearer
Mr. Stanley T. Sumida

Investments Committee:

Mr. John A. Lockwood, chm.

Dr. Moheb Amin Ghali

* indicates those elected at this 7th Diocesan Convention, 1975

INTERIM MANAGEMENT COMMITTEE

The Rev. Eugene L. Harshman, Standing Committee
The Rev. David K. Kennedy, Board of Directors

The Rev. Canon James G. Long, Secretary

From the Standing Committee

The Rev. Thomas K. Yoshida

Mr. Arthur Awai

(Mr. Frederick H. Overstreet)

Mr. Paul Franklin Weaver

From the Board of Directors:

The Very Rev. Herbert N. Conley

Mr. Robert A. Merriam

Mr. Nathaniel R. Potter

Diocesan Treasurer:

Mr. Henry F. Budd

PROCEEDINGS
of the 7th convention

Friday, October 17, 1975

WORSHIP The Seventh Annual Convention of the Diocese of Hawaii opened with Solemn Evensong at 7:00 p.m., in St. Andrew's Cathedral. The Rev. Curtis R. Zimmerman was officiant. The sermon was delivered by the Rev. John Paul Engelcke (*see Attachment IV, page 9 of 9 and the following.*)

Evensong was followed by the program, "What is Our Common Ministry," as sponsored by the Episcopal Church Women of Hawaii, with guest speaker, Mr. Barry Menuet, Lay Ministries Coordinator, Executive Council of the Episcopal Church. He shared ways in which laity throughout the Church are taking an active part in the Church's ministry. Discussion groups followed the presentation.

Saturday, October 18, 1975

CALL TO ORDER Convention was called to order at 8:17 a.m., in St. Andrew's Priory Gymnasium, by the Rev. Eugene L. Harshman, President of the Standing Committee.

Opening prayers were offered, and the Necrology List read (*Attachment I*). Thanks were given to the Rev. Peter E. Van Horne as officiant, the Rev. George Lee as litanist, and the Rev. Charles L. Halter as necrologist.

The Rev. Franklin S.H. Chun was declared Secretary Pro Tem of Convention.

A quorum was declared present.

PRESIDENT Convention was declared open and ready for business.

**&
SECRETARY** The first item of business, according to the Constitution and Canons of this Diocese, was that upon the vacancy of the Diocesan Bishop, the President of the Standing Committee shall preside until Convention is organized and ready for business. A President of Convention, a clergyman of the Diocese, must then be elected. The Rev. Eugene L. Harshman was elected President of Convention.

The Rev. Franklin S.H. Chun was elected Secretary; and the Rev. Donn H. Brown was appointed Assistant Secretary, with confirmation by Convention.

**APPOINTMENT,
TELLERS** Tellers were appointed, with the Rev. John E. Crean, Jr., as Chairman. (*see Attachment II, page 1.*)

COURTESY OF FLOOR The Rev. Dr. Paul M. Wheeler moved that the courtesy of the floor and voice be extended to the Rev. Imo S. Tiapula, from American Samoa; the Rev. and Mrs. John A. Filler.

Best wishes were extended to the newly wedded, the Rev. and Mrs. Fred G. Minuth.

The Rev. Charles G.K. Hopkins was introduced and reported on his work with the Hawaiian ministry.

NOMINATIONS The Rev. Barrett K. Lindsey, Chairman of the Committee on Nominations and Elections presented the slates.

& ELECTIONS It was noted that the Standing Committee, as ecclesiastical authority, nominated persons where nominations by the Bishop were called for.

There being no nominations from the floor for Treasurer, Registrar, Chancellor, Vice Chancellor, Judge-Ecclesiastical Court (clergy), and Judge Ecclesiastical Court of Appeals, a motion was made and seconded that those nominees be declared elected by acclamation. The motion carried (*see Attachment III*)

The Historiographer, the Rev. Kenneth D. Perkins, and also the Commission on Ministry were confirmed by acclamation.

Mr. Burnham H. Greeley, Vice Chancellor, spoke to the delegates on the method of voting.

The Rev. Canon James G. Long moved, in order to expedite the election process, that in all elections, if those to be elected are not chosen by majority vote on the first ballot, that the plurality rule be in effect on the second ballot. It was noted that Section 1 of Article 18 of the Constitution was amended at the last Convention to provide this type of voting to cover only the officers of Convention. Canon Long's motion opened this type of voting to all elections. The motion carried.

It was noted that for the Board of Directors there must be a member from each of the Neighbor Islands. If no one represents an Island after the first vote, then there must be a nomination and election of someone from the Island not represented.

The delegates then cast their ballots for the remaining offices and the Tellers retired to count the votes.

Dr. Moheb Ghali asked for views not received from nominees for Deputies to General Convention. Views were given orally by Mr. Jack Lockwood, Mrs. Bee Wilson, and the Rev. John Liu.

A fifteen minute recess was declared in the proceedings.

RESOLUTIONS, MEMORIALS The Rev. Elsbury W. Reynolds, chairman of the Committee on Resolutions, was called to present the following:

(Attachment IV, pages 1-9) includes the resolutions and their discussions).

RESOLUTION 1: FINANCE FIGURES IN "GIVING FOR WORK OUTSIDE PARISH"
(Attachment IV, page 1 of 9)
Carried

RESOLUTION 3: MEMORIAL THAT CLERGY BE DIRECTORS OF C.P.F.
(Attachment IV, page 1 of 9)
Carried

RESOLUTION 4: COMMITTEE TO REVIEW DIOCESAN CONSTITUTION & CANONS
(Attachment IV page 2 of 9)
Carried

RESOLUTION 5: MEMORIAL FOR "WOMEN CHURCH WORKERS"
(Attachment IV, pages 3-4 of 9)
Carried

RESOLUTION 6: AFFECTION & ALOHA TO BP. & MRS. KENNEDY
(Attachment IV, page 5 of 9)
Carried

RESOLUTION 7: AFFECTION & ALOHA TO MRS. HANCHETT
(Attachment IV, page 5 of 9)
Carried by standing ovation

RESOLUTION 8: AFFECTION & ALOHA TO SISTERS, C.T.
(Attachment IV, page 5 of 9)
Carried

RESOLUTION 9: AFFECTION & ALOHA TO MISS MORTON
(Attachment IV, page 5 of 9)
Carried

RESOLUTION 10: HANCHETT MEMORIAL MISSION TRUST FUND
(Attachment IV, page 6 of 9)
Carried as amended

RESOLUTION 11: TO ESTABLISH FELLOWSHIP
(Attachment IV, page 7 of 9)
Failed

RESOLUTION 2: REPRODUCING & DUPLICATING RESOLUTIONS
(Attachment IV, page of 8 of 9)
Failed

RESOLUTION 12: SERMON & PHOTO ESSAY ON BP. HANCHETT
(Attachment IV, page 9 of 9)
Carried by standing ovation

RESOLUTION 13: AFFECTION & ALOHA TO CANON & MRS. SHIM
(Attachment IV, page 8 of 9)
Carried

RESOLUTION 14: AFFECTION & ALOHA TO FR. & MRS. ALTER
(Attachment IV, page 8 of 9)
Carried

APPOINT-
MENTS

The Standing Committee noted that it tried to maintain continuity, and wherever possible has maintained the same Committees. The names of the Chairmen were read. The Chairmen were to select their own Committees, and in most cases the Committees remained the same. (see Attachment II.)

The Rev. Rudolph A. Duncan asked if someone would be chosen to direct the Diocesan Hunger Effort. He was informed that the Interim Management Committee would take the matter into consideration.

TREASURER'S
REPORT

The Very Rev. Herbert N. Conley, Chairman of the Finance Committee of the Board of Directors, introduced Mr. Henry Budd to present the budget. The Rev. Mr. Conley in his introductory remarks informed the Diocese that there had been two task forces working on the budget, and that the one being presented

BUDGET

was as open and honest a budget as was possible. In the past the Diocese has been spending more money than it received, and the budgets had not been realistic.

Mr. Budd then presented the budget of \$356,747.92.

As of September 30, 1975, the Trust Endowment fund was invested as follows:

Short term investments	\$ 35,000
Mortgage notes	132,000
Corporate bonds	1,865,000
Preferred Stock	60,000
Common Stock	1,156,000

Realized Investment Appreciation \$1,001,640

Estimated income on the fund is 9.1% on the market value and 7.41% on cost value.

The Finance Committee had an active year, especially the subcommittees on real estate, assessments and salary studies.

The Rev. Gerald G. Gifford, II, objected to the removal of \$150 for the religious film hui and explained his reasons. He was asked to make a recommendation to the Program Committee.

The Rev. Guy Piltz asked that cutting expenses be considered.

The Rev. Roger M. Melrose asked if the pension funds and retirement funds could be consolidated and if there was some way in which the women church workers could be included in the Diocesan Pension Plan.

The budget was unanimously accepted as presented.

ANNOUNCE-
MENTS

The Rev. Jan Rudinoff announced that there were tables of Christian Education materials, for anyone to view and study.

A Quiet Day for laity and friends was planned for Saturday, November 1, 8 a.m. - 2 p.m., with the Rev. John E. Crean, Jr., as retreat master.

The Episcopal Charismatic Fellowship was sponsoring a Regional Conference on Thanksgiving weekend. Mr. Don Dawson was to be contacted for more information.

A discussion was held on the process and the timetable for election of a new bishop with remarks by Mrs. Jan Bond and the Rev. Thomas Yoshida.

The Rev. David K. Kennedy moved that the agenda for Convention be modified to include information that was to be included after the workshops. The motion carried.

MISC.
RESOLUTIONS

The Rev. Dr. Paul M. Wheeler moved that Convention thank most heartily the clergy and laity of the Big Island for so generously offering to change their plans, thereby permitting Convention to be held in Honolulu rather than in Hilo as originally planned. Carried.

The Rev. Dr. Wheeler moved that Convention commend each and every committee-man charged with the grave task of running this Diocese in the absence of its Bishop. The harmonious and unselfish manner in which each person was serving was a great credit to the entire Diocese. Carried.

He further moved that expressions of grateful acknowledgment be sent to the staffs of St. Andrew's Cathedral--especially its maintenance personnel--and to St. Andrew's Priory School for their assistance and for turning over their facilities for Convention use. Carried.

He further moved that Convention express to Miss Genevieve Wheeler abundant thanks for agreeing to record the minutes of this Convention. Her cheerful willingness to accommodate us this year, as in the past, is acknowledged with deep gratitude. Carried.

He further moved that Miss Ruby Nakamura be given special recognition by Convention. Almost single-handedly she worked on the numerous phases of paper-work necessary in preparing for Convention. Thanks also went to Mesdames Helen Lai, Bee Wilson, Marge McKinney, and Nancy Kuhn for their willing help. Carried.

He further moved for a round of applause for Iolani School for their willingness to provide lunch for Convention.

The Rev. Dr. Wheeler moved that the reports and preparation of minutes be accepted by Convention. Carried.

The Rev. Canon James G. Long moved that Convention give resounding applause for the very professional job of the Rev. Eugene L. Harshman and Mr. Burnham H. Greeley for carrying themselves like real pros in conducting the Convention. Carried.

The Rev. Dr. Paul M. Wheeler offered thanks to the women of St. Andrew's Cathedral for the morning's breakfast.

NEXT

CONVENTION

The Rev. Donn H. Brown, on behalf of the Committee on Convention Plans, proposed the setting of a fixed date for future Conventions to: (1) allow more time for preparation of plans, budgets, resolutions, elections and any parish preparations; (2) set a dependable and predictable date; and (3) assure that the Diocesan Convention would always follow the General Convention.

The Committee proposed the first weekend of November as a fixed date for Convention each year. Surveys have been made and no conflicts were found. Therefore, the Committee moved that Convention establish the first weekend in November as the date for the annual Convention of the Diocese. The motion carried.

HUNGER

EFFORT

The Rev. Rudolph A. Duncan spoke. There are 15 organizations in the Diocese working on the hunger project, and \$7,000 so far has come from this Diocese. The Rev. Mr. Duncan had packets on the program for those who were interested. Anyone could help state-wide or nationally. A report will be made to the next Convention.

Following noon-day prayers, a luncheon was served by Iolani School, for Convention delegates and visitors. Donations were solicited, and \$373.50 was received for use in the relief of world and local hunger.

ELECTION

RESULTS

(Saturday afternoon). A question was raised on the ballot for the Board of Directors. It was asked if, rather than marking a new ballot, the fourth person be chosen. It was decided by counsel that a new ballot had to be made.

There was no clear majority for either clergy or lay for deputies for General Convention.

The Rev. Homer Vanture moved that the first ballot become the second ballot and that those be chosen by plurality vote.

The Rev. Charles Crane moved that we have the tellers read the results of the first ballot and the second ballot be cast.

The Rev. John Crean felt that Convention was in a position at this time, if we were to accept the second ballot, to fairly well pick out the number needed.

This could be done.

A motion made to conduct the elections in this manner carried.

It was moved that the final results be announced at Communion on Sunday October 19. The motion carried. (see Attachment III).

STUDYING

THE

"SURVEY"

Convention then moved into studying results of the survey taken by church members on Sunday September 28th, examining ourselves, determining the goals for the Diocese, and for the kind of Bishop which we will elect.

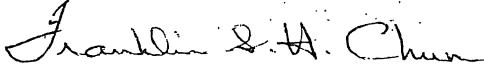
Dr. Dick Kappenberg and Ms. Linda Brown, specialists in group dynamics and problem solving, discussed the data gathered. Delegates were then divided into groups of ten, and assigned the task of defining problems associated with calling a Bishop, questions which a prospective Bishop should be asked, and evaluation of responses.

Sunday, October 19, 1975
10:00 a.m. St. Andrew's Cathedral

CONVENTION

EUCHARIST

Convention concluded with Holy Communion from the Book of Common Prayer. The Rev. Eugene L. Harshman was chief con-celebrant with the Very Rev. Herbert N. Conley, dean. The Rev. Dr. Paul M. Wheeler, rector of St. Clement's Parish was the preacher.


The Rev. Franklin Seu Hook Chun
Secretary, Diocesan Convention

FC: gw/hl

NECROLOGY 1975

HAWAII, Island of

Holy Apostles'

Jane C. Hutchison
Marjorie K. Roberts

St. Augustine's

Bellaray K.K. Jenkins

St. Columba's

Lawrence de la Cruz

KAUAI, Island of

All Saints'

Yoshio Kamei

St. Michael's

Janet S. Akana

St. Paul's

Frederick M. Hayselden

MAUI, Island of

Good Shepherd

Arthur C. Betts, Jr.
Guy Gurney
Ethel Naquin
Jose Salvador
Robert Spencer
John Ulman
Grace Valentine

Holy Innocents'

Ivy Buchanan
Joseph Rodrigues

St. John's

Frederick Simpich, Jr.

OAHU, Island of

Calvary

William O. Bush
Janet R. Catton
Evelyn R. Walker

Epiphany

Clarence T. Lee
Elizabeth C. Lee

Good Samaritan

Ruth T. Miyao

Holy Nativity

Esther L. Darrow
Suzanna C. Glantz
Jessie B. Hickey

James Meader

Rachel B. Needham
Wallace W. Tanner

St. Andrew's Cathedral

Mary M. Anderson
The Rt. Rev. E. Lani Hanchett
John M. Horner
Florence H. Judd
Harry B. Kane

Mele W. L'Orange

Miriam K. Palmerston
Minnie V. Reid
Arthur K. Schofield
Grace M. Sevilla
Elizabeth N. Strauch

St. Christopher's

Agatin Abbott
Ann Butler
Helen V. d'Arcambal

Barbara F. Hoffman

Francis L.K. O'Sullivan
John Topliss
Mavis M. Topliss

NECROLOGY 1975

OAHU, Island of (contd.)

St. Clement's

Eleanore D. Crane
Hester de'Vis Norton
Edna K. Forbes

Forrest J. Pinkerton

Jannatt Rushforth
Paul W. Rushforth
Howard E. Wiig

St. Elizabeth's

Wayne Y. Sakaguchi

St. John's-by-the-Sea

Malcolm W. Bridgman
Francis Daniels
Christina M.K. Furtado
John P. Stibbard

St. Luke's

Woo O. Kim
Yong K. Lee

St. Mark's

Walter N.S. Ho

St. Mary's

Aaron Soong

St. Matthew's

Charles H. Wilkinson

St. Paul's, PIC

Patricio Gudoy
Geraldo Piniol
Wayland S. Mandell

St. Peter's

Carl L.K. Ching
Oi Y.N. Fung
Yen Moi Fung
Kaleiolani T.R. Kong

Yuen Farr Pang

Wilfred Quon
Sarah T. Soong
Elsie C. Young

St. Stephen's

Clifford S.Y. Kauwe
Karen M. Macfie
Henry R. Vaughan

Loys Vaughan

Richard S. Waterhouse
Willard Whiting

St. Timothy's

The Rev. Frederick J. Ellis, Jr.

Waikiki Chapel

John Hunter

A P P O I N T M E N T S

TELLERS

The Rev. John E. Crean, Jr., Chm. Mr. Harry Chang
The Rev. John A. Filler Mr. Riley S.W. Kam
The Rev. Curtis R. Zimmerman Mrs. Nellie Manuwai
Miss Angie Stanich

COMMISSION ON MINISTRY

The Rev. Roger M. Melrose, Chm. Mrs. Joseph D. Clarke (Manono)
The Rev. Richard S.O. Chang Mr. Don Dawson
The Rev. George Lee Mr. Larry Grant
The Rev. Norio Sasaki Mr. Norman T. Westly

HISTORIOGRAPHER

The Rev. Kenneth D. Perkins

ASSISTANT SECRETARY TO CONVENTION

The Rev. Donn H. Brown

COMMITTEE ON CAMPS AND CONFERENCES

The Rev. Brian J. Grieves, Chm. Mrs. John Lockwood (Diana)
The Rev. Franklin S.H. Chun Mr. Keith Merriam
The Rev. Barrett K. Lindsey Mr. Robert M. Merriam
Mr. Lowrey Sinclair

COMMITTEE ON CONTINUING EDUCATION

The Rev. John P. Engелеke, Chm.
(ad hoc committee to be appointed as necessary)

COMMITTEE ON CONSTITUTION AND CANONS

The Rev. Burton L. Linscott, Chm. Chief Justice William S. Richardson
(unconfirmed)

COMMITTEE ON CONVENTION PLANS

The Rev. Franklin S.H. Chun, Chm. Mrs. William A. Swartman (Suzanne)
The Rev. Donn H. Brown
The Rev. Eugene L. Harshman

COMMITTEE ON ECUMENISM

The Rev. Dr. Paul M. Wheeler, Chm. Mr. Frederick H. Overstreet
The Rev. Donn H. Brown Mrs. Joseph H. Punmill (Phoebe)
The Rev. Richard E. Winkler, Jr. Dr. Stanley West
The Rev. Robert Mackey (Roman Catholic)
The Rev. Dr. Harry S. Komuro (United Methodist)

A P P O I N T M E N T S (CONTD.)

COMMITTEE ON HAWAII E.A.S.T.

The Rev. George Lee, Chm. Ms. Linda Brown
The Rev. Darrow Aiona Mr. Alfredo Evangelista
The Rev. Justo Andres Mrs. Vicky Liu
The Rev. Charles Burger Mrs. Hatsune Sekimura
The Rev. Dick Chang Mr. Henry Sung
The Rev. Alex Geston Mr. Erni Uno
The Rev. Charles Hopkins Mr. Clifford Young
The Rev. Morimasa Kaneshiro Mrs. Juliet Young
The Rev. John Liu
The Rev. Vincent O'Neill
The Rev. Timoteo Quintero
The Rev. Jerry Reynolds
The Rev. Norio Sasaki
The Rev. Thomas Yoshida

COMMITTEE ON LITURGY

The Rev. Donn H. Brown, Chm. Mrs. Joseph Levine
The Rev. Brian J. Grieves
The Rev. Barrett K. Lindsey
The Rev. Curtis R. Zimmerman

COMMITTEE ON NECROLOGY

The Rev. Charles L. Halter, Chm.
The Rev. Norio Sasaki
The Rev. Arthur Ward

COMMITTEE ON NOMINATIONS AND ELECTIONS

The Rev. Barrett K. Lindsey, Chm. Mr. William Balfour
The Rev. Charles S. Burger Mrs. Colin C. Cameron (Margaret)
The Rev. Guy H. Piltz Mrs. David Malvin (Joan)
The Rev. Homer S. Vanture Dr. Stanley West
The Rev. Richard E. Winkler, Jr.
The Rev. Dr. Paul M. Wheeler

COMMITTEE ON PRAYER AND DEVOTIONAL LIFE

The Rev. Thomas K. Yoshida, Chm. Mrs. Lou Campbell (unconfirmed)
The Rev. Brian J. Grieves Mrs. Lila Morgan (unconfirmed)
The Rev. Homer S. Vanture Mrs. Homer S. Vanture (unconfirmed)

COMMITTEE ON RESOLUTIONS

The Rev. Etsbery W. Reynolds, Chm. Mr. John Lockwood
The Rev. J. Hollis Maxson Mrs. Donald Mitchell (Winifred)
Mrs. Sam Perry (Helen)

ELECTIONS

(Dates indicate expiration of term)

Diocesan Treasurer	Mr. Henry F. Budd	11/76
Diocesan Chancellor	Mr. James H. Tabor	11/76
Vice-Chancellor	Mr. Burnham H. Greeley	11/76
Secretary of Convention	The Rev. Franklin S.H. Chun	11/76
Registrar	The Rev. Curtis R. Zimmerman	11/76

JUDGES, ECCLESIASTICAL COURT

The Rev. John P. Engelcke	11/78	Col. Campbell Palfrey, Jr.	11/78
The Rev. Peter E. Van Horne	11/77	* Mr. Malcolm W. Oliphant	11/77
* The Rev. Thomas K. Yoshida	11/76	* Mr. Peter Ogilby	11/76

JUDGES, ECCLESIASTICAL COURT OF APPEALS

The Rev. John Y.F. Liu	11/78	Mr. William M. Beardsley	11/78
* The Rev. David P. Coon	11/77	* Mrs. Helen M. Redding	11/77
* The Rev. Richard S.O. Chang	11/76	* Mr. John A. Newcomer	11/76

DEPUTIES TO GENERAL CONVENTION

The Rev. Charles S. Burger	Mrs. Richard W. (Jan) Bond, Jr.
The Rev. Eugene L. Harshman	Mr. Frederick H. Overstreet
The Rev. David K. Kennedy	Mr. Nathaniel R. Potter, Jr.
The Rev. Thomas K. Yoshida	Mr. Ernest Uno

ALTERNATE DEPUTIES TO GENERAL CONVENTION

The Very Rev. Herbert N. Conley	Mr. Henry F. Budd
The Rev. Rudolph A. Duncan	Mrs. Richard T. (Ray Elizabeth) Herkner
The Rev. Dr. Claude F. Du Teil	Mr. John A. Lockwood
The Rev. Roger M. Melrose	Mrs. Marilyn E. Stassen

* indicates those who were elected at previous Diocesan Conventions

RESOLUTION 1: FINANCIAL FIGURES IN "GIVING FOR WORK OUTSIDE PARISH"

WHEREAS the listing GIVING FOR WORK OUTSIDE PARISH, published annually in the JOURNAL OF CONVENTION, contains only those monies which pass through the Diocesan Treasurer's Office, thereby indicating only a portion of the total contributions made by the parishes, and

WHEREAS, such method of listing gives a distorted view of the stewardship of each parish,

THEREFORE BE IT RESOLVED, that in subsequent issues of JOURNAL OF CONVENTION the financial figures used in the list GIVING FOR WORK OUTSIDE PARISH be derived from the Annual Parochial Reports submitted annually to the Diocese by each parish.

Respectfully submitted,

RICHARD E. WINKLER
Church of the Good Shepherd

Henry Budd pointed out that a good percentage of the parish reports on work outside the parish were inaccurate.

The Rev. Richard E. Winkler amended his motion after "derived" in the last paragraph to read "derived from figures submitted annually to the Diocese by each parish." The motion was carried as amended by the submitter.

CARRIED WITH SECOND BY THE REV. DR. PAUL M. WHEELER

* * * * *

RESOLUTION 3: MEMORIAL THAT CLERGY BE DIRECTORS OF C.P.F.

WHEREAS, The Church Pension Fund of the Episcopal Church does not have Parish Clergy representation on its Board of Directors and

WHEREAS, the benefits of the Pension are of direct concern to the Clergy and their families, be it

RESOLVED, that the Annual Convention of the Diocese of Hawaii memorialize the General Convention of the Episcopal Church, meeting in Minneapolis in September, 1976, that Parish Clergy be elected to the Board of Directors of the Church Pension Fund.

/s/ PAUL MOORE WHEELER

The Rev. Paul Moore Wheeler

CARRIED

RESOLUTION 4: COMMITTEE TO REVIEW DIOCESAN CONSTITUTION & CANONS

WHEREAS the present Diocesan Constitution and Canons have proven unclear on several procedures during the Vacancy of the See;

WHEREAS the generally available edition of said Constitution and Canons speaks of District Deans, a Cabinet, a Diocesan Council, and provides for the seating in Convention of resident Sisters of the Community of the Transfiguration, there being none such;

WHEREAS the present Diocesan Constitution and Canons have no provision defining the "professional character" of, or the "uses of the Church" concerning privileged Communications between Pastor and Parishioner as necessitated by Hawaii Revised Statutes 1972, (621-23);

WHEREAS the present Diocesan Constitution and Canons have proven unclear on the order, management, procedures, and organization of the Diocese's Annual Convention;

BE IT THEREFORE RESOLVED THAT:

- (1) A Committee of Clergy and Laity, not to exceed eleven, be appointed by the Interim Management Committee:
 - (a) to review the said Canons and Constitutions,
 - (b) to make recommendations for additions, alterations, and revisions as deemed necessary,
 - (c) to submit such recommendations to the appointing authority on or before 1 March 1976, and
 - (d) to be funded in a manner commensurate with the importance of its task (i.e., travel allotments, per diem, secretarial help, materials, etc.);

AND BE IT FURTHER RESOLVED THAT:

- (2) Said Committee shall have as its members: (a) Jurists, (b) Church Historian(s), (c) Standing Committee member(s), (d) Member(s) of the Board of Directors, (e) Parish Clergy, (f) Mission Clergy, (g) Non-stipendiary Clergy, and (h) Laity;

AND BE IT FURTHER RESOLVED THAT:

- (3) All Clergy and all Concerned Laity review said Constitution and Canons and submit their recommendations in writing on or before 15 December 1975 to the said Committee on Constitution and Canons, c/o The Diocesan Offices, St. Andrew's Cathedral, Queen Emma Square, Honolulu, Hawaii, 96813.

Submitter: THE REV. JOHN PAUL ENGELCKE
21.IX.75

CARRIED

RESOLUTION 5: MEMORIAL FOR "WOMEN CHURCH WORKERS"

A MEMORIAL FROM THE SEVENTH CONVENTION OF THE DIOCESE OF HAWAII (1975) TO THE SIXTY-FIFTH GENERAL CONVENTION OF THE EPISCOPAL CHURCH, MEETING IN MINNEAPOLIS, 1976:
WHEREAS there is at present no retirement provision authorized by the General Convention and maintained for the benefit of "Women Church Workers" listed in The Episcopal Church Annual (1975, pp. 62-65);

WHEREAS there is a "Retiring Fund for Women in the Diaconate" designated to provide for women in the Diaconate on retirement from active service who have insufficient provision for their needs (The Episcopal Church Annual, 1975, p. 62) and a deaconess pension fund provision by the national Church (111.26.7, 1973):

WHEREAS it is repugnant to Christ's teachings and Christian love to fail to provide for those who have full-time and faithfully served the Church professionally their entire working lives, or a major portion thereof;

WHEREAS the training and experience of said "Women Church Workers" are unique and unlike that of other Church workers (secretaries, organists, sextons, etc.) and do not permit easy transfer to full-time secular employment on retirement or on unemployment after long years of Church service;

WHEREAS, like many Clergy, over their career many "Women Church Workers" will serve in several Dioceses;

BE IT THEREFORE RESOLVED that the Seventh Convention of the Episcopal Church in Hawaii, convened this date in Honolulu, memorializes the 1976 General Convention of the Episcopal Church

TO:

- (1) ESTABLISH an adequate retirement fund for the "Women Church Workers" presently listed in The Episcopal Church Annual (1975, pp. 62-65);
- (2) PROVIDE adequately from current Church revenues for retired "Women Church Workers" or such workers long-employed presently not so listed in the aforesaid Annual;
- (3) INSURE such payments to individuals and such subsequent payments by individuals, dioceses, parishes, and other institutions of the Church to the "Women Church Workers" Pension Fund be at least on a par with Church Pension Fund assessments, payments, and

benefits for clergy of comparable income and years of service;

(4) APPROPRIATE funds for and appoint a joint Committee of the General Convention (1.1.2.(b), 1973) to (a) make immediate provision, together with Diocesan Bishops and Commissions on Ministry (111.1.7., 1973), for those "Women Church Workers" presently needy or distressed and to (b) establish the qualifications for those hereafter to be entered on this list entitled "Women Church Workers" and the procedures for their proper compensation, pension assessments, benefits, and retirement income.

DONE this _____ day of October in the year of Our LORD 1975 in the See City of the Diocese of Hawaii by the Seventh Convention of the Diocese.

GIVEN AND CERTIFIED under the Diocesan Seal and the hand of the President of the Standing Committee and of the Chancellor of the Diocese and of the Secretary of the Diocesan Convention, the See's being vacant.

S	President, Standing Committee, Diocese of Hawaii
E	
A	Chancellor, Diocese of Hawaii
L	
21.IX.75. Submitter: THE REV. JOHN PAUL ENGELCKE	Secretary, Seventh Convention (1975), Diocese of Hawaii

Mr. Larry Grant, Holy Nativity, felt that a more definite title was needed than "churchwomen" or "churchworkers."

The Very Rev. Herbert N. Conley felt that this was a basic philosophical demand to the Board and it was better that it was not detailed.

The Episcopal Churchwomen of Hawaii requested Convention to pass this resolution.

CARRIED

RESOLUTION 6: AFFECTION & ALOHA TO BISHOP & MRS. KENNEDY

RESOLVED that the Episcopal Church in Hawaii in Convention assembled, send a message of Affection and Aloha to

THE RT. REV. & MRS. HARRY S. KENNEDY
in gratitude for their years of faithful work and gracious service to and for the well-being of the Diocese of Hawaii.
Submitter: THE REV. JOHN PAUL ENGELCKE
21.IX.75

CARRIED

RESOLUTION 7: AFFECTION & ALOHA TO MRS. HANCHETT

RESOLVED that the Episcopal Church in Hawaii in Convention assembled, send a message of Affection and Aloha to

PUANANI HANCHETT
for her gracious work, for her unique contribution to the well-being of the Diocese, and in profound sympathy for her loss.
Submitter: THE REV. JOHN PAUL ENGELCKE
21.IX.75

CARRIED BY STANDING OVATION

RESOLUTION 8: AFFECTION & ALOHA TO SISTERS, C.T.

RESOLVED that the Episcopal Church in Hawaii in Convention assembled, send a message of Affection and Aloha to the Sisters of the Community of the Transfiguration, Glendale, Ohio, and especially to those who served here at St. Andrew's Priory School:

SISTER EVA DOROTHEA, C.T. SISTER MONICA MARY, C.T.
SISTER EVELYN ANCILLA, C.T. SISTER STEPHANIE HELEN, C.T.
SISTER LUCY CARITAS, C.T. SISTER URSULA ELIZABETH, C.T.
SISTER HELEN VERONICA, C.T. SISTER LAURA MARY, C.T.
in gratitude for their years of affective work and faithful service to the Church and to the young ladies of Hawaii
Submitter: THE REV. JOHN PAUL ENGELCKE
21.IX.75

CARRIED

The Rev. John P. Engelcke noted that he chose the name "young ladies" with great care because he felt what the Priory was about was producing young ladies of good education with some knowledge of Christianity.

RESOLUTION 9: AFFECTION & ALOHA TO MISS MORTON

RESOLVED that the Episcopal Church in Hawaii in Convention assembled, send a message of Affection and Aloha to

MISS KATHERINE MORTON
in gratitude for her many years as faithful secretary to Bishop Kennedy, as writer of the Hawaiian Church Chronicle, and as a constant help to clergy and laity alike.
Submitter: THE REV. JOHN PAUL ENGELCKE
21.IX.75

CARRIED

RESOLUTION 10: HANCHETT MEMORIAL MISSION TRUST FUND

WHEREAS the Fourth Diocesan Convention at Lahaina, Maui, on October 14, 1972 created a "Capital Fund for Mission" in the Diocese of Hawaii, and

WHEREAS it was recognized, then, that there was "need for a capital fund, the income from which would be designated for the support of the existing mission churches and the expansion of the mission of the church in the Pacific," and that "the need for these funds will increase as time passes" and that "the participation in the mission of the Church is the responsibility of all Christian people," and

WHEREAS, the need for such a fund still exists in the Diocese of Hawaii, therefore,

BE IT RESOLVED, that the name of the Fund be changed to "The Diocesan Mission Trust Fund," and be it further

RESOLVED that all Episcopalians, through the Hawaiian Church Chronicle and other appropriate means be encouraged to make bequests directly to The Diocesan Mission Trust Fund of the Diocese of Hawaii, and be it further

RESOLVED that members of the church contemplating bequests to their respective Parishes and Missions be encouraged to designate to The Diocesan Mission Trust Fund a tithe (10%) of all bequests left to Parishes and Missions for their respective purposes, and be it further

RESOLVED that the income from The Diocesan Mission Trust Fund be used for the subsidy of Parishes and/or Missions unable to support their budgets in full and/or for new work in the Diocese, with requests for grants to be made by the Bishop to the Board of Directors in their capacity as trustees of said fund.

Submitter: Diocesan Financial Strategy Task Force
THE REV. CHARLES T. CRANE, Chairman

.....
The Honorable Richard "Ike" Sutton moved that the motion be amended to call the fund the "E. Lani Hanchett Memorial Mission Trust Fund."
The Amendment to the motion carried.

CARRIED AS AMENDED.

The Rev. Dr. Paul M. Wheeler asked the Chancellor if a parish could legally take money left to the parish for a specific purpose and donate 10% of it to this fund. The Chancellor suggested that a vestry petition the Court on this if there was a question in a specific will. The Rev. Dr. Wheeler's question referred to paragraph 6 of the resolution and it was pointed out that this portion of the resolution "encourages" a 10% tithe, but does not demand it.

RESOLUTION 11: TO REESTABLISH FELLOWSHIP

WHEREAS the Episcopal Church will have one of the most important and potentially divisive Conventions in its history in September, 1976 in Minneapolis-St. Paul;

AND, WHEREAS, the issues coming before that body have received widespread publicity through all forms of media communication, often producing more heat than light;

AND, WHEREAS, it has become evident to all who are active and devoted to this branch of God's Catholic Church, that impassioned and emotional polarization has already occurred;

AND, WHEREAS, that as a result of that polarization, the effects of the balloting will ultimately culminate in only a win-lose situation for many members of this diocese;

AND, WHEREAS, open hurt and rejection may be felt by those who find themselves in the "lose" position;

AND, WHEREAS, the possibility of rejection by opponents or proponents has brought about open talk of schism which can only mean that the church loses;

AND, WHEREAS, our Lord and Savior came into this world to teach us about love, forgiveness and acceptance, and we as His followers ought always to be ready to put those things into daily practice in our lives;

AND, WHEREAS, we of this diocese do not wish to reject, drive out, read out or ignore any member of the body, but desire to reach out in love and understanding; and always be ready to heed the guidance of the Holy Spirit;

AND, WHEREAS, we recognize the potential and great hurt that may come to some of our brothers and sisters resulting from the actions of the General Convention and that we desire now to make plans for the acceptance, reconciliation and healing of the hurt that has resulted from the divisive issues;

BE IT THEREFORE RESOLVED THAT an interim committee be appointed by the Ecclesiastical Authority to begin now to think through and set forth positive and concrete plans that will help us to be prepared to reestablish that bond of fellowship so much desired of God for His people in this Diocese, and that said plans be presented to the next regular annual convention.

THE REV. HOMER S. VANTURE

.....
The Rev. Homer S. Vanture spoke on his resolution saying that other Dioceses had adopted this type of resolution at their conventions.

Dr. Tom Cahill of St. Timothy's did not feel that we needed a Diocesan Committee to instruct us in how to act like Christians.

FAILED

RESOLUTION 2: REPRODUCING & DUPLICATING RESOLUTIONS

Be it hereby resolved that all resolutions and substitute resolutions presented on the floor at Diocesan Convention be reproduced and placed in the hands of the Delegates before any discussion or action thereon;

Be it also resolved that the cost of duplicating any resolution(s) or substitute resolution(s) submitted after the due date for the submission of resolutions be borne by the submitter.

Respectfully submitted,

*/s/ RICHARD E. WINKLER
September 1975*

.....
The Rev. William Grosh felt that the resolution was an unnecessary cutting off of the democratic process.

Mr. Robert Moore, St. Peter's, felt that the resolution would remove the spontaneity of Convention and spoke against the resolution.

The Rev. Richard E. Winkler did not want to have to vote on a long resolution without first seeing it in front of him.

Mrs. Bee Wilson, St. Andrew's, said that the Print Shop could handle running off a resolution in a hurry, and agreed that the resolution was unnecessary.

The Rev. John Liu was in agreement with the first paragraph of the resolution and asked that Convention consider eliminating the second paragraph while retaining the first.

FAILED

RESOLUTION 13: AFFECTION & ALOHA TO CANON & MRS. SHIM

"Resolved that the Episcopal Church in Hawaii, in Convention assembled, send a message of affection and aloha to Canon and Mrs. Wai On Shim in gratitude for their years of faithful work and gracious service to the Diocese of Hawaii."

Submitted on the floor by The Rev. Thomas K. Yoshida

CARRIED

RESOLUTION 14: AFFECTION & ALOHA TO FR. & MRS. ALTER

"Resolved that the Episcopal Church in Hawaii, in Convention assembled, send a message of affection and aloha to The Rev. and Mrs. Norman Alter in gratitude for their years of faithful work and gracious service to the Diocese of Hawaii."

Submitted on the floor by The Rev. Thomas K. Yoshida

CARRIED

RESOLUTION 12: SERMON & PHOTO ESSAY ON BISHOP HANCHETT

RESOLVED THAT

BE IT RESOLVED THAT THE MAGNIFICENTLY STIRRING SERMON OF THE REVEREND JOHN PAUL ENGELCKE DELIVERED AT THE OPENING SERVICE ON OCTOBER 17, 1975, BE PRINTED IN FULL IN THE JOURNAL OF THIS CONVENTION, AND

BE IT FURTHER RESOLVED THAT THE BOARD OF DIRECTORS BE URGED TO DIRECT THE INCLUSION IN THE JOURNAL OF THIS CONVENTION A PHOTOGRAPHIC ESSAY ON THE LIFE AND EPISCOPATE OF THE RIGHT REVEREND EDWIN LANI HANCHETT, AND

BE IT FURTHER RESOLVED THAT THIS CONVENTION EXPRESSES ITS PROFOUND THANKS TO FATHER ENGELCKE FOR HIS CONTRIBUTION IN MEMORY OF OUR LATE AND BELOVED BISHOP.

ANONYMOUSLY SUBMITTED

ON BEHALF OF ALL OF US.

CARRIED

.....
The Chair noted that the resolution was a definite exception to the rule that all resolutions must have an author. This anonymously submitted resolution is not to be considered a precedent.

A SERMON DELIVERED IN THE CATHEDRAL CHURCH OF ST. ANDREW, HONOLULU, HAWAII, AT THE OPENING SERVICE OF THE SEVENTH DIOCESAN CONVENTION OF THE EPISCOPAL DIOCESE OF HAWAII, 17 OCTOBER 1975, BY THE REV. JOHN PAUL ENGELCKE.

LET US NOW PRAISE FAMOUS MEN, AND OUR FATHERS IN THEIR GENERATIONS. ...MEN OF MERCY, WHOSE RIGHTEOUS DEEDS HAVE NOT BEEN FORGOTTEN.... PEOPLES WILL DECLARE THEIR WISDOM, AND THE CONGREGATION PROCLAIMS THEIR PRAISE.

--ECCLESIASTICUS (THE WISDOM OF JESUS BEN SIRACH) 44:1, 10, 15.

I.

IN ART MUSEUMS, NEXT TO SOME PARTICULAR TREASURE, ONE OFTEN FINDS THE SIGN: "ON INDEFINITE LOAN FROM SUCH-AND-SUCH A COLLECTION." ON INDEFINITE LOAN.

THE FACT IS: THAT, LIKE THESE ART TREASURES, WE EACH ARE ON INDEFINITE LOAN TO ONE ANOTHER. AND WE NEVER KNOW WHEN THE LOAN IS UP. PLANS ARE MADE; HOUSES ARE BOUGHT; BOOKS PROJECTED; LETTERS POSTPONED.... AND THEN THE INDEFINITE LOAN IS UP. WE DO NOT KNOW WHY. IT JUST IS.

THIS SEVENTH DIOCESAN CONVENTION OF THE EPISCOPAL CHURCH IN HAWAII MEETS IN CIRCUMSTANCES UNFAMILIAR TO MOST OF US: THE ABSENCE OF A DIOCESAN BISHOP, THE ABSENCE OF A FATHER IN GOD. THE EPISCOPAL THRONE IS EMPTY; THE SEE IS VACANT; THAT INDEFINITE LOAN IS UP. WE ARE BETWEEN WHAT WAS, AND WHAT SHALL BE. THE FUTURE IS HID FROM US BY THE MERCY OF GOD. BUT THE PAST, ALSO BY THE MERCY OF GOD, BECOMES CLEARER. AND WE CAN SAY,

THE LORD HATH LOANED US LANI.
THE LOAN IS UP. BLESSED BE THE
NAME OF THE LORD FOR THE LOAN OF LANI.

II.

WHAT DID THE LOAN OF LANI MEAN? IT CERTAINLY MEANT GENEROSITY. I FIRST MET HIM IN BERKELEY, IN THE CHURCH'S SEMINARY THERE. HE LIVED AT THE END OF THE SECOND FLOOR OF PARSONS HALL, IN A LOVELY ROOM OVERLOOKING SAN FRANCISCO BAY. THAT DAY HE HAD RECEIVED A CARE-PACKAGE OF ISLAND "GOODIES" FROM HIS FAMILY IN LAHAINA. "CRACK SEED" AND MACADAMIA NUTS WERE AMONG THOSE GOODIES. IT WAS SO LONG AGO. MACADAMIA NUTS STILL CAME IN THOSE TALL, FLAT GLASS JARS WITH A GOLD, RED, AND BLACK LABEL.

STUPIDLY, WITH INNOCENT HONESTY, I SAID, "OH, MACADAMIA NUTS!" REMEMBERING HOW FIRST I HAD TASTED THEM IN HAWAII IN THAT YEAR THE KOREAN WAR BEGAN. IT WOULD NOT DO, EXCEPT THAT I SHOULD HAVE A JAR -- ONE OF TWO, HALF OF WHAT LANI HAD. I WAS CHAGRINED. HE WAS HAPPY.

GENEROSITY. ALOHA.

III.

THAT YEAR WAS ALSO THE YEAR OF THE ASIAN FLU. THE MEDIA HAD HERALDED ITS COMING. IN MY FAMILY THE SPANISH FLU IS STILL SPOKEN OF WITH DREAD AND REGRET. AND I HAD ONCE PAGED A COLLEGE ANNUAL FOR THE YEAR 1920. HOW MANY HAD DIED IN 1917 AND 1918 OF THAT TERRIBLE FLU! WAS ASIA TO DUPLICATE SPAIN'S DEADLY GIFT?

THE FLU SANDBAGGED ME ON THE WAY TO CHAPEL. TO BED I WENT, AS ILL AS I HAD BEEN UP TO THAT POINT. YET, DAILY, MORNING AND EVENING, LANI LOOKED IN ON ME. "WHAT COULD HE DO? ANYTHING?" -- THOSE WERE HIS QUESTIONS. WE DID NOT KNOW EACH OTHER, REALLY. I WAS JUST HIS NEIGHBOR, SOMEONE DOWN THE HALL IN PARSONS IN NEED. THE EXAMPLE OF CHRIST'S GOOD SAMARITAN HAD BE-

GOTTEN THIS MAGNIFICENT HAWAIIAN. IN THE WORDS OF BEN SIRACH, HE WAS A MAN

"...OF MERCY, WHOSE RIGHTEOUS DEEDS HAVE NOT BEEN FORGOTTEN."
44:10

WHAT DID THE LOAN OF LANI MEAN: LOVING-KINDNESS, AS WELL AS GENEROSITY.

IV.

ANOTHER CLERGYMAN ASSIGNED TO VISIT ST. FRANCIS HOSPITAL CAME BACK TO LANI ONE DAY AND BEGGED TO BE LET OFF VISITING ONE PATIENT. THAT PATIENT WAS ANCIENT, AND CANCER HAD BRUTALLY ERODED AND NASTILY DISFIGURED HIS FACE. THE SIGHT AND THE STENCH WERE TERRIBLE! THAT CLERGYMAN -- A GOOD MAN AND COMPASSIONATE, REALLY -- JUST COULD NOT COPE. HE COULD NOT HANDLE THAT HOSPITAL VISIT. HE TOLD LANI. LANI ANSWERED SIMPLY, "I WILL GO. DO NOT WORRY." AND GO HE DID, ALTHOUGH IT MEANT INTERRUPTING THE ONE DAY THAT HE HAD SET APART FOR HIMSELF AND FOR HIS FAMILY. GO HE DID, AS WHEN HE HELPED WITH THE CLEAN-UP OF THE BOMBED, LONG CAPSIZED, AND NOW RIGHTED OKLAHOMA AT PEARL HARBOR. I SAID, "LANI, HOW DID YOU STAND IT! HOW COULD YOU DO IT!" I, FOR ONE, CAN THINK OF NO MORE LOATHSOME TASK, THEN OR NOW, THAN THAT: CLEANING UP THE OKLAHOMA. THERE WAS A PAUSE. HE SIMPLY SAID, "SOMEONE HAD TO." SOME ONE HAD TO. DUTY DONE, HOWEVER NASTY. DUTY DONE, HOWEVER ODIOUS. ANOTHER MEANING OF THE LOAN OF LANI.

V.

ONE TIME I HAD AN AWESOME FIGHT WITH THE THEN BISHOP'S SECRETARY. IT WAS ONE OF THOSE STORMS THAT BEGIN, AS ELIJAH PHRASED IT, LIKE A SMALL CLOUD ON THE HORIZON, NO LARGER THAN A MAN'S HAND. IT ENDED AS AN EARTHQUAKE, THUNDERSTORM, AND TSUNAMI ALL ROLLED INTO ONE. THE WRATH OF A YOUNG CLERGYMAN CAN BE VIOLENT INDEED. I STORMED AWAY, IN FURY, TO ST. PETER'S CHURCH.

SHE QUIETLY CALLED LANI, SUGGESTING THAT HE SPEAK TO ME. HE DID. AND MY KILAUEA ERUPTED AGAIN, WITH SUCH SENTIMENTS AS "I'LL BE DAMNED IF I WILL EVER APOLOGIZE TO HER!"

THERE WAS A LONG PAUSE. I HAD SAID ALL, AND MORE, THAN I SHOULD HAVE. THEN LANI QUIETLY REBUKED ME, CALMLY SAYING, "JOHN, HOW DOES WHAT YOU HAVE JUST SAID FIT OUR CHRISTIAN RELIGION?" NOTHING MORE. JUST THAT QUESTION: "JOHN, HOW DOES WHAT YOU HAVE JUST SAID FIT OUR CHRISTIAN RELIGION?" DOWN I WENT FROM ST. PETER'S AND BACK TO THE BISHOP'S OFFICE. FOR IF WE DO NOT FORGIVE, AS WE KNOW ALL TOO WELL, NEITHER ARE WE FORGIVEN. THE LOAN OF LANI MEANT AND MEANS BETTER CHRISTIANS HERE IN HAWAII AND ELSEWHERE, AS I DO TESTIFY, WITH SO MANY OTHERS.

VI.

ONE DAY AT ST. PETER'S THE WALLS OF LANI'S OFFICE SHOOK. VOICES MOUNTED IN NOISE-LEVEL. WORDS WERE SAID WHICH RUMBLLED THROUGH THE WALLS AND WERE OMINOUS AND THREATENING. ONE OF THE DIOCESE'S SENIOR CLERGY STORMED OUT OF LANI'S OFFICE. THE PARISH SECRETARY AND I WAITED A BIT FOR THE DUST TO SETTLE. I DECIDED TO GO IN. THERE HE SAT, THINKING. LOOKING UP, HE WAS NOT ANGRY. ALTHOUGH FROM THE WORDS SHE AND I HAD HEARD, LANI HAD EVERY REASON TO BE. HE ASTONISHED ME. HE MERELY SAID, "JOHN, WHAT AM I DOING WRONG? HOW CAN I LOVE HIM MORE? HOW CAN I LOVE HIM MORE?"

ONE LESSON OF THE LOAN OF LANI IS CERTAINLY THIS: ARE WE WILLING TO LET LOVE -- LOVE ALONE -- PRESIDE? THE PRESIDENCY OF LOVE.

VII.

ONE COULD GO ON:

--HOW LANI LABORED OVER SERMONS. HOW, IF ONE WORKED AND LISTENED CAREFULLY, THERE WAS ALWAYS SOMETHING VALUABLE AND FRESH THERE. HOW SO OFTEN, UNKNOWINGLY, SADLY, HE GOT IN HIS OWN WAY.

--HOW LANI SPOKE, BRIEFLY, ELOQUENTLY, LIKE LINCOLN AT GETTYSBURG, WITH SIMPLICITY AND PURITY, THE MORNING HIS MOTHER DIED. PAUL SAVANACK, EQUALLY OF BLESSED MEMORY, THE SCHEDULED PREACHER OF THAT DAY, PAUSED AFTER LANI HAD SPOKEN AND BEFORE HIS OWN SERMON. HE SAID, IN WONDER AND ADMIRATION, "YOU HAVE HEARD, DEAR FRIENDS, NOT MERELY THE TESTIMONY OF A CHRISTIAN, BUT THE CHRISTIAN WITNESS OF A SON." I WAS IN TEARS.

--HOW BEFORE ONE CLERGYMAN REGULARLY EXCUSED HIMSELF ON THE IMPROBABLE PRETEXT OF FEEDING HIS CAT, LANI'S GRANDCHILD HAD ALREADY BADLY DENTED THE WEEKLY STAFF MEETINGS AT ST. PETER'S BY HER CAREENING INTO LANI'S OFFICE AND CLIMBING INTO GRANDFATHER'S LAP. "ALLOW THE LITTLE CHILDREN TO COME UNTO ME AND FORBID THEM NOT."

--HOW ON THAT DAY ON WHICH HE BECAME THE EPISCOPAL AUTHORITY OF THE DIOCESE, THE ORDINARY AS WE SO MYSTERIOUSLY CALL HIM, LANI STAYED IN HIS OWN OFFICE AND WOULD NOT MOVE INTO BISHOP KENNEDY'S. I SAW HIM IN THE EARLY EVENING THAT DAY. BISHOP KENNEDY HAD NOT BEEN IN ALL DAY. HE WAS GRACIOUSLY ABSENT THE FIRST DAY OF HIS RETIREMENT. I PRODDED LANI, SAYING "LANI, SOME TIME YOU MUST MOVE IN." HUMILITY HAD HELD HIM BACK.

VIII.

BUT MY CONCLUDING WORDS OF RIGHT AND HONOR OUGHT TO BE LANI'S. FOR, WHILE ST. JEROME THOUGHT AN EDUCATION WAS THE BEST LEGACY THAT A FATHER COULD

GIVE HIS CHILDREN, OTHERS -- LIKE LANI -- KNOW ONE'S BEST LEGACY IS PERHAPS A HOLY AND CONFIDENT DEATH. ONE THAT HELPS US DIE WHEN OUR OWN LOAN TO OTHERS IS UP.

IN HIS LAST LETTER TO THE CLERGY, LANI WROTE:

AS ALWAYS, I AM RESTING QUIETLY IN THE LORD. I HAVE ONLY HOPE FOR THE FUTURE. IF IT BE THE LORD'S WILL THAT I SURVIVE, PRAISE HIS HOLY NAME. IF, ON THE OTHER HAND, HE CALLS ME TO HIS NEARER PRESENCE, I STAND READY FOR THAT EVENTUALITY AS WELL. THE LORD HAS BEEN MY STRENGTH AND MY HELP IN OTHER CRISES IN MY LIFE, AND I KNOW THAT HE WILL CONTINUE WITH ME.

NOTHING HAS BEEN HIDDEN FROM MY FAMILY. MY WIFE AND FAMILY HAVE BEEN TREMENDOUS SOURCES OF COMFORT AND JOY. I THANK GOD FOR THEM AND FOR THE JOY OF EACH NEW DAY.

AS I LOOK OUT OF MY FOURTH FLOOR WINDOW HERE IN THE HOSPITAL AND WATCH THE NIGHT TURN TO DAY, I KNOW THAT MY FUTURE IS IN THE HANDS OF A DEPENDABLE GOD. AND, AS I TRUST IN HIM, I NEED HAVE NO FEAR.

OUR LORD JESUS CHRIST DIED AND ROSE AGAIN TO GIVE US GOD'S OWN ASSURANCE THAT WE, TOO, WILL FOLLOW IN HIS WAY, AS LONG AS WE GIVE OURSELVES INTO HIS KEEPING.

IX.

EACH OF US WILL SUM UP THE MEANING OF THE LOAN OF LANI IN ONE'S OWN WAY. FOR ME, AS I THINK FOR SO MANY OTHERS, THE MEANING OF THE LOAN OF LANI MAY BE, SIMPLY AND GRANDLY, THIS: "CHRIST'S ALOHA MADE PRESENT AND REAL IN OUR OWN DAY, IN OUR OWN LIVES, AND IN OUR OWN EXPERIENCE."

AS EPISCOPALIANS WE ARE ASKED NOT TO ADD EULOGIES TO THE BURIAL OFFICE NOR ENCOMIA TO REQUIEM COMMUNIONS. THESE ARE ONE OF THE SOUNDEST PRACTICES OF

OUR RELIGION. FOR THEN IT IS PLAINLY TOO SOON...OR TOO LATE. AND THE LOSS
RENDERS US MAUDLIN AND MYOPIC.

BUT AS CHRISTIANS WE ARE ALSO ASKED TO REMEMBER AND TO FOLLOW THE GOOD
EXAMPLES OF OUR FELLOW CHRISTIANS. IT IS, I HOPE, NOT TOO SOON TO HAVE SO
SPOKEN OF E. LANI HANCHETT, SEVENTH BISHOP OF HAWAII, FRIEND AND FATHER IN
GOD TO US ALL, NOR TOO LATE TO REMEMBER HIM AT THIS FIRST SERVICE OF THE
DIOCESE'S SEVENTH CONVENTION.

INDEED, THE SCRIPTURES SAY:

LET US NOW PRAISE FAMOUS MEN, AND OUR FATHERS IN THEIR GENERATIONS.
...MEN OF MERCY, WHOSE RIGHTEOUS DEEDS HAVE NOT BEEN FORGOTTEN.
PEOPLES WILL DECLARE THEIR WISDOM, AND THE CONGREGATION PROCLAIMS
THEIR PRAISE.

SO HAVE WE DONE.

LET US PRAY:

ALMIGHTY GOD, WE GIVE THEE HEARTY THANKS FOR THE
GOOD EXAMPLES OF ALL THOSE THY SERVANTS, WHO,
HAVING FINISHED THEIR COURSE IN FAITH, DO REST
FROM THEIR LABORS. AND HEREIN MOST ESPECIALLY WE
THANK THEE FOR THE LIFE AND LOAN OF LANI. AND WE
HUMBLY BESEECH THEE, THAT WE, FOLLOWING IN THE GOOD
WORKS THAT THOU WOULDST HAVE US TO DO, MAY HAVE OUR
PERFECT CONSUMMATION AND BLISS, BOTH IN BODY AND SOUL,
IN THY ETERNAL AND EVERLASTING GLORY, THROUGH JESUS
CHRIST OUR LORD.

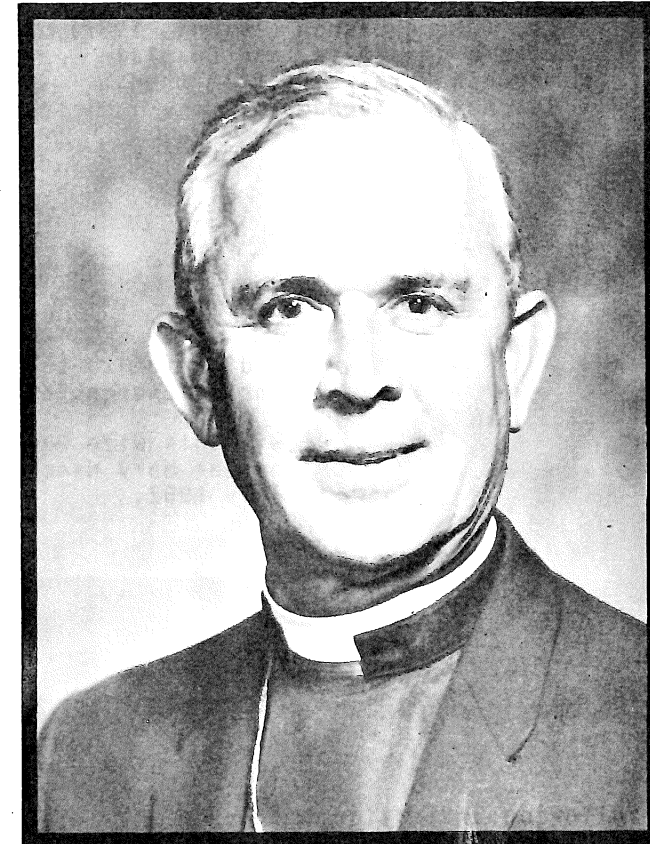
AMEN.

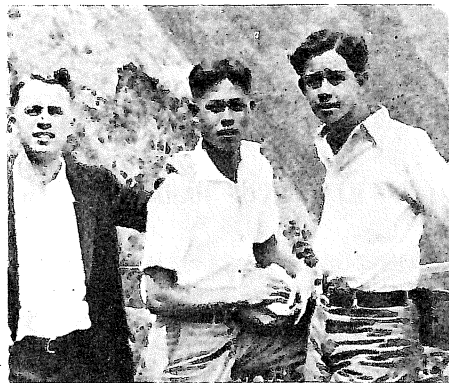
I N M E M O R I A M

THE RIGHT REVEREND E. LANI HANCHETT, D.D.

VIIth BISHOP OF HAWAII

(2 NOVEMBER 1919 - 11 AUGUST 1975)





The future Bishop (Iolani, 1937) with a classmate, and Chaplain Kenneth Perkins (left), then Teacher of Sacred Studies.

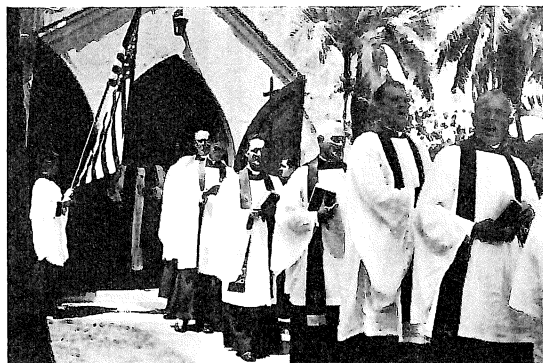


Ordination to the Diaconate: Christ Church, Kilauea, Kauai,

with his wife Puanani, and mother Mary Hanchett Rice, July 1952.

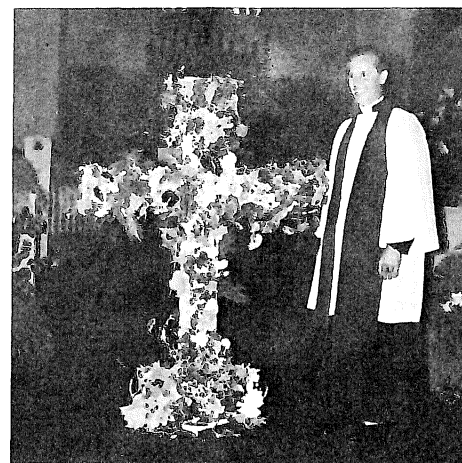
Procession following Ordination to the Priesthood: Holy Innocents', Lahaina, Maui, 19 September 1953.

Left to right (outside): The Rev. Norman Alter, the Rev. E. Lani Hanchett, the Rev. Norman C. Ault (also ordained that day), and the Rev. Paul R. Savanack.

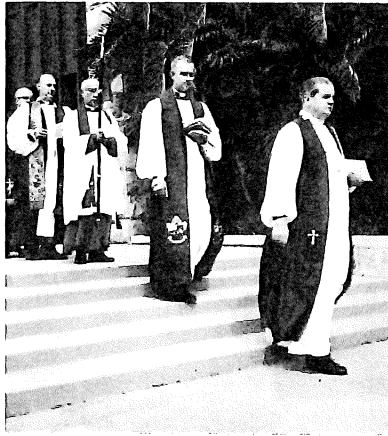


Founder and Director of Camp PECUSA, Olowalu, Maui, while Vicar of Holy Innocents' (1952 - 1960) and Archdeacon of Maui, at Fleming's Beach.

Presentation to leading laymen, by the Vicar of St. George's, Pearl Harbor (1960 - 1961).



With the Easter Floral Cross when Rector of St. Peter's, Honolulu (1961 - 1967).

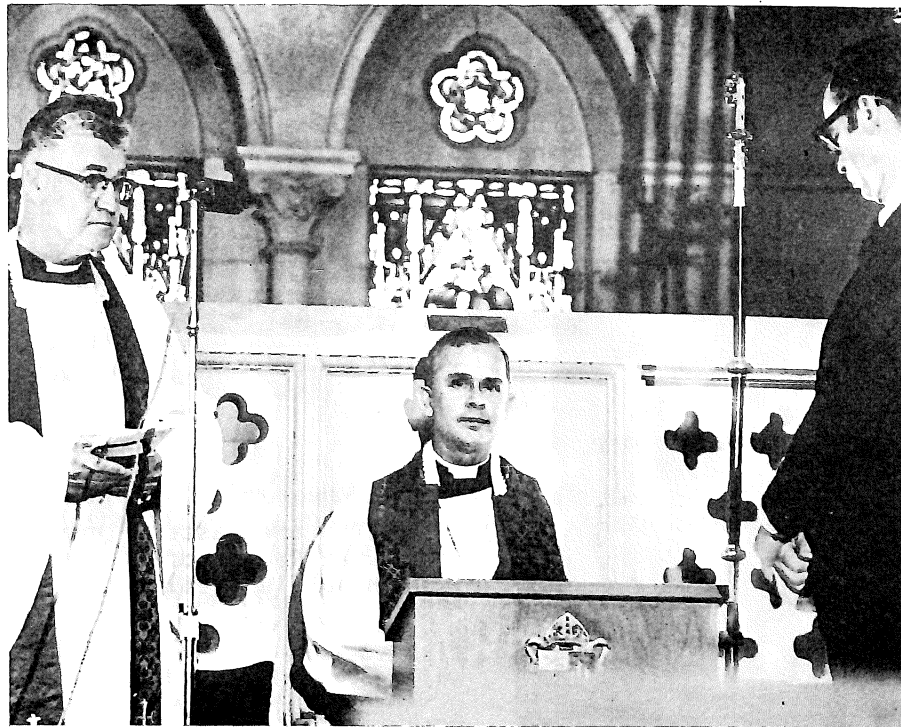


Following his Consecration as
Suffragan Bishop, 30 December 1967.

From right to left, the Presiding
Bishop, John E. Hines; Bishop Hanchett,
Canon Wai On Shim, Bishop Kennedy, and
Bishop J.W.F. Carman of Oregon.

Enthroned as Hawaii's VIIth Bishop,
St. Andrew's Cathedral, 18 January 1970,

with the Ven. J. Irwin McKinney, Dean (left);
and Mr. Nathaniel Potter, Senior Warden (right).



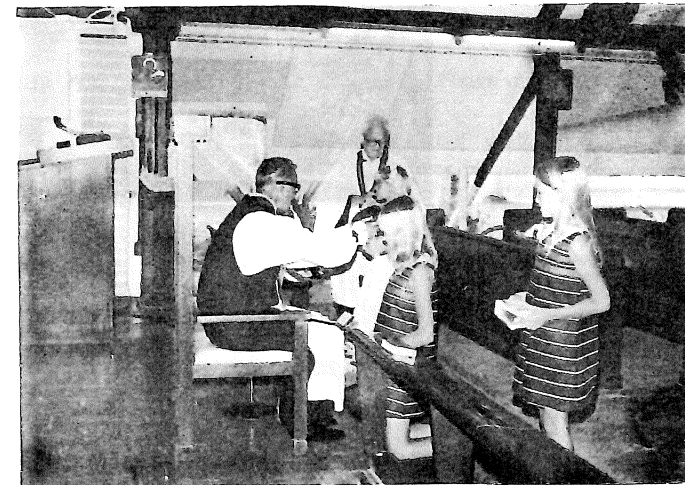
ON THE GO...



Bishop and Mrs. Hanchett, Saipan,
Trust Territories of the Pacific.



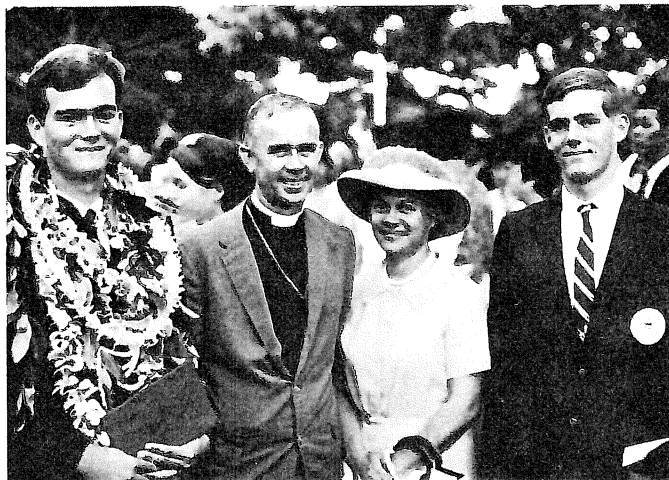
Bishop Hanchett, at the
Dedication of Hanchett-
House in Taiwan, March 1973.



Confirmation, at Base Chapel,
Kwajalein, Trust Territories,
with Dr. Merele Smith, M.D.,
Lay Reader (background).



St. Timothy's, Aiea, 1 June 1969
with Hannah Jones, one of the
Founding Parishioners.



At Iolani's graduation,
together with Mrs. Hanchett.



At a luau in his honor, on the
Grounds of St. Andrew's Cathedral,
July 1970.

BISHOP'S STATISTICAL REPORT FOR 1975

CLERGY:

Bishops 2*
Active 38
Nonparochial 23

Military chaplains 3
Retired 12
Licensed 3

SEMINARIANS:

Candidates for Holy Orders 3
Candidates not in seminary 1

LAY READERS:

159

* Diocesan Bishop deceased August 11, 1975

CLERGY CHANGES:

(No transfers)

(No letters dismissory)

Ordained

To the Diaconate: John A. Filler

(No ordinations to Priesthood)

Reception from Roman Catholic Church: Vincent dePaul O'Neill

(No retirements)

(No suspensions)

EPISCOPATE ENDOWMENT FUND:

\$1,049,463.30

JUDGMENTS REGARDING PERMISSION TO BE REMARRIED
IN THE CHURCH AFTER DIVORCE:

46

OFFICIAL CLERGY LIST

Canonically resident in the Diocese of Hawaii in the order of their residence which is prefixed, with the order of their ordination to the diaconate which is affixed, as of October 17, 1975:

Active

1945	The Reverend Burton L Linscott Church of the Epiphany, 1041 Tenth Ave, Honolulu, Hawaii 96816	1945
1949	The Reverend Claude F Du Teil, DD St Christopher's Church, Box 456, Kailua, Hawaii 96734	1949
1950	The Reverend William R Grosh 1315 Opua St, Honolulu, Hawaii 96818	1950
1951	The Reverend Evans D Scroggie 7811 Eads Ave, Apt 305, La Jolla, California 92037	1948
1951	The Right Reverend E Lani Hanchett, DD, Bishop Diocesan Office, Queen Emma Sq, Honolulu, Hawaii 96813 (deceased August 11, 1975)	1952
1954	The Reverend W Edwin Bonsey, Jr Church of the Holy Apostles, 1407 Kapiolani St, Hilo, Hawaii 96720	1954
1954	The Reverend David P Coon, DD, MA Iolani School, 563 Kamoku St, Honolulu, Hawaii 96814	1954
1955	The Reverend Paul M Wheeler, DD St Clement's Church, Box 5403, Honolulu, Hawaii 96814	1939
1956	The Reverend Morimasa Kaneshiro Iolani School, 563 Kamoku St, Honolulu, Hawaii 96814	1956
1957	The Reverend Arthur B Ward Iolani School, 563 Kamoku St, Honolulu, Hawaii 96814	1938
1957	The Reverend Charles T Crane Church of the Holy Nativity, 5286 Kalaniana'ole Hwy, Honolulu, Hawaii 96821	1957
1958	The Reverend Norio Sasaki Iolani School, 563 Kamoku St, Honolulu, Hawaii 96814	1958

1959	The Reverend Canon Timoteo P Quintero St Paul's Church (PIC), Queen Emma Sq, Honolulu, Hawaii 96813	1954
1959	The Reverend Roger M Melrose Seabury Hall, Box 497, Makawao, Hawaii 96768	1959
1960	The Reverend Jacinto B Tabili St Andrew's of the Philippine Sea, Box FB, Agana, Guam 96910	1957
1960	The Reverend Joseph H Pummill St Clement's Church, Box 5403, Honolulu, Hawaii 96814	1958
1960	The Reverend William H Aulenbach, Jr 417 Keller Ave, Santa Ana, California 92707	1960
1960	The Reverend Covy E Blackmon 98-356 Kaono'hi St, Apt 4, Aiea, Hawaii 96701	1960
1961	The Reverend Thomas K Kunichika Hawaii Preparatory Academy, Kamuela, Hawaii 96743	1961
1961	The Reverend J Hollis Maxson 447 Kawaihae St, Honolulu, Hawaii 96825	1961
1961	The Reverend Fred G Minuth St Andrew's Priory, Queen Emma Sq, Honolulu, Hawaii 96813	1961
1962	The Reverend Eugene B Connell 423 Portlock Rd, Honolulu, Hawaii 96825	1958
1962	The Reverend Delbert S Westling 2050 Nuuanu Ave, Honolulu, Hawaii 96817	1962
1962	The Reverend Thomas K Yoshida St Stephen's Church, 1679 California Ave, Wahiawa, Hawaii 96786	1962
1963	The Reverend Darrow LK Aiona 2333 Kapiolani Blvd, Apt 616, Honolulu, Hawaii 96814	1963
1963	The Reverend John P Engelcke 1309-2C Queen Emma St, Honolulu, Hawaii 96813	1963
1963	The Reverend David K Kennedy St Timothy's Church, 98-939 Moanalua Rd, Aiea, Hawaii 96701	1963
1963	The Reverend (Chaplain) Victor H Krulak, Jr, USN 12th Marine Regt, 3rd Marine Div, FMF, FPO San Francisco 96602	1963
1963	The Reverend Guy H Piltz St James' Church, Box 266, Kamuela, Hawaii 96743	1963

1964	The Reverend (Chaplain) Donald B Harris, USN Box 12, US Naval Sta, FPO New York 09540	1964
1965	The Reverend Justo R Andres Church of the Good Shepherd, Church and Main Sts, Wailuku, Hawaii 96793	1955
1966	The Reverend Gerald G Gifford II, DM Iolani School, 563 Kamoku St, Honolulu, Hawaii 96814	1952
1966	The Reverend Charles S Burger Holy Innocents' Church, Box 606, Lahaina, Hawaii 96761	1966
1966	The Reverend Richard SO Chang All Saints' Church, Box 248, Kapaa, Hawaii 96746	1966
1966	The Reverend Canon Charles GK Hopkins, Jr St Matthew's Church, Box 70, Waimanalo, Hawaii 96795	1966
1966	The Venerable Jordan B Peck, Jr, Archdeacon of Micronesia, Church of St John the Divine, Box FB, Agana, Guam 96910	1966
1967	The Reverend Richard E Winkler Church of the Good Shepherd, Church and Main Sts, Wailuku, Hawaii 96793	1952
1967	The Reverend John YF Liu St Elizabeth's Church, 720 N King St, Honolulu, Hawaii 96817	1962
1967	The Reverend Elsbery W Reynolds V St Andrew's Priory, Queen Emma Sq, Honolulu, Hawaii 96813	1967
1968	The Reverend George Lee St Luke's Church, 45 N Judd St, Honolulu, Hawaii 96817	1957
1968	The Reverend (Chaplain) Douglass C Colbert, USA USAGH-Adapt, APO San Francisco 96343	1960
1968	The Reverend Franklin SH Chun St Peter's Church, 1317 Queen Emma St, Honolulu, Hawaii 96813	1968
1968	The Reverend Rudolph A Duncan St Mary's Church, 2062 S King St, Honolulu, Hawaii 96814	1968
1969	The Reverend Theodore TY Yeh, ThD 160 Mohouli St, Hilo, Hawaii 96720	1942

1969	The Reverend Joseph W Turnbull St Mark's Church, 539 Kapahulu Ave, Honolulu, Hawaii 96815	1945
1969	The Reverend Donn H Brown St Barnabas' Church, 91-1841 Ft Weaver Rd, Ewa Beach, Hawaii 96706	1969
1971	The Reverend Canon James G Long, Canon to the Ordinary, Waikiki Chapel, 227 Lewers St, Honolulu, Hawaii 96815	1954
1971	The Reverend Charles L Halter Iolani School, 563 Kamoku St, Honolulu, Hawaii 96814	1971
1971	The Very Reverend Herbert N Conley, Dean St Andrew's Cathedral, Queen Emma Sq, Honolulu, Hawaii 96813	1954
1971	The Reverend Richard E Winkler, Jr St John's Church, Box 247, Eleele, Hawaii 96705	1971
1971	The Reverend Eugene L Harshman Calvary Church, 45-435 Aumoku St, Kaneohe, Hawaii 96744	1958
1971	The Reverend Paul S Kennedy Iolani School, 563 Kamoku St, Honolulu, Hawaii 96814	1963
1971	The Reverend William A Collins, Jr Emmanuel Church, Box 357, Kailua, Hawaii 96734	1971
1972	The Reverend Harry E Owings, Jr Church of St John the Divine, Box FB, Agana, Guam 96910	1941
1972	The Reverend Brian J Grieves Church of the Holy Nativity, 5286 Kalaniana'ole Hwy, Honolulu, Hawaii 96821	1972
1973	The Reverend Barrett K Lindsey St Andrew's Cathedral, Queen Emma Sq, Honolulu, Hawaii 96813	1966
1973	The Reverend Peter E Van Horne St John's Church, RR 1, Box 212, Kula, Hawaii 96790	1970
1973	The Reverend Imo S Tiapula Box 2030, Pago Pago, American Samoa 96799	1971
1973	The Reverend John T Moore, Jr St John's Episcopal Preparatory School, Box FB, Agana, Guam 96910	1973

1974	The Reverend Jan C Rudinoff Church of St Michael and All Angels, Box 572, Lihue, Hawaii 96766	1972
1974	The Reverend John E Crean, Jr 315 Anapalau St, Honolulu, Hawaii 96825	1974
1974	The Reverend Curtis R Zimmerman St Andrew's Cathedral, Queen Emma Sq, Honolulu, Hawaii 96813	1974
1974	The Reverend Homer S Vanture St George's Church, 511 Main St, Honolulu, Hawaii 96818	1962
1975	The Reverend John A Filler St Augustine's Church, Box 278, Kapaau, Hawaii 96755	1975

Retired

1932	The Reverend Kenneth D Perkins 1350 Ala Moana Blvd, Apt 2103, Honolulu, Hawaii 96714	1932
1933	The Reverend Edward M Littell 311 Sixth St, Hoboken, New Jersey 07030	1933
1933	The Reverend Canon Wai On Shim, DD 4010 Poli Hiwa Pl, Honolulu, Hawaii 96817	1933
1944	The Right Reverend Harry S Kennedy, DD, STD 1001 Wilder Ave, Apt 806, Honolulu, Hawaii 96822	1925
1944	The Reverend Norman R Alter Box 219, Kailua-Kona, Hawaii 96740	1927
1952	The Reverend Norman C Ault RR 1, Box 323, Kula, Hawaii 96790	1952
1954	The Reverend Paul H Kim 2886 Center St, Stevinson, California 95374	1930
1961	The Reverend Edward M Mize 2210 Jackson St, San Francisco, California 94115	1930
1962	The Reverend Albert J Collins c/o L Gunn, 32764 Pacific Coast Hwy, Malibu, California 90265	1962
1964	The Reverend James S Nakamura 3141 Olu St, Honolulu, Hawaii 96816	1940
1966	The Reverend Fredrick A Barnhill, DD 805 W State Ave, Phoenix, Arizona 85021	1958
1967	The Reverend J Irwin McKinney 744 N 83rd St, Seattle, Washington 98103	1930

Licensed

The Reverend David M Paisley Christ Church, Box 545, Kealahou, Hawaii 96750	1952
The Reverend (Chaplain) Frederick J Ellis, Jr 1445 Olino St, Honolulu, Hawaii 96818 (deceased June 28, 1975)	1952
The Reverend (Chaplain) Theodore F Sirotko 809 Hamilton St, Schofield Bks, Hawaii 96557	1965
The Reverend Alejandro S Geston Church of the Resurrection (PIC), Box 262, Paauilo, Hawaii 96776	1967

Candidates

1977	David H Jackson Protestant Episcopal Theological Seminary Alexandria, Virginia 22304
1977	Robert D Rowley, Jr The Episcopal Theological Seminary of the Southwest Box 2247, Austin, Texas 78767
1977	Robert E Walden The Church Divinity School of the Pacific 2451 Ridge Rd, Berkeley, California 94709

Candidates not attending seminary

Richard A Martelles 99-149 Heen St, Aiea, Hawaii 96701
Vincent dP O'Neill 5085 Likini St, Apt 209, Honolulu, Hawaii 96818
Robert L Steele 526 Ulumalu St, Kailua, Hawaii 96734
Norman T Westly 525 Kilauea Ave, Suite 202, Hilo, Hawaii 96720

I hereby certify that the foregoing list of clergy of the Diocese of Hawaii is correct and that under the provisions of Articles VI and VII of the Constitution of the Diocese, all of those who have been canonically resident in the Diocese of Hawaii for six months are entitled to full membership of the Convention.

Eugene L. Harshman

The Reverend Eugene L Harshman, President
Standing Committee

ASSESSMENT AND QUOTA

	<u>Accepted</u> 1975	<u>Paid</u> 12/31/75
All Saints'	\$ 3,799.00	\$ 3,799.00
Calvary	5,203.00	5,203.00
Christ Church	2,976.00	2,976.00
Christ Memorial	931.00	931.00
Emmanuel	3,468.00	3,468.00
Epiphany	4,277.00	4,277.00
Good Samaritan	1,812.00	1,812.00
*Good Shepherd	6,187.00	4,872.00
Grace Church	619.00	681.00
Holy Apostles'	3,084.00	3,084.00
Holy Cross	471.00	471.00
Holy Innocents'	3,934.00	3,934.00
Holy Nativity	15,393.00	15,400.00
Iolani School	-0-	300.00
Kohala Missions	1,321.00	1,321.00
Resurrection, PIC	608.00	608.00
St. Andrew's Cathedral	36,000.00	36,000.00
*St. Barnabas'	3,199.00	1,869.00
*St. Christopher's	11,560.00	7,500.00
St. Clement's	11,403.00	11,403.00
St. Columba's	489.00	489.00
St. Elizabeth's	7,081.00	7,081.00
St. George's	2,442.00	2,442.00
St. James, Kamuela	2,788.00	2,788.00
St. John's, Eleele	1,794.00	1,794.00
**St. John's, Guam	1,000.00	-0-
St. John's, Kula	1,823.00	1,823.00
St. John's By-The-Sea	1,189.00	1,189.00
St. Jude's	549.00	549.00
St. Luke's	3,532.00	3,532.00
St. Mark's	4,778.00	4,778.00
St. Mary's	4,590.00	4,590.00
St. Matthew's	825.00	825.00
St. Michael's	1,374.00	1,374.00
St. Paul's, Kekaha	778.00	778.00
St. Paul's, PIC	1,349.00	1,349.00
St. Peter's	8,771.00	8,771.00
St. Philip's	295.00	295.00
St. Stephen's	3,912.00	4,030.00
St. Thomas'	353.00	353.00
St. Timothy's	6,168.00	6,168.00
Waikiki Chapel	871.00	1,071.00
	<hr/>	<hr/>
	\$ 172,996.00	\$ 165,978.00
*Receivable:		
Good Shepherd		1,315.00
St. Barnabas'		1,330.00
St. Christopher's		4,060.00
**Write Off:		
St. John's, Guam	(1,000.00)	
	<hr/>	<hr/>
	\$ 171,996.00	\$ 172,683.00
	<hr/>	<hr/>

1975 OPERATING BUDGET

	<u>Budget</u>	<u>Actual</u>	<u>Balance</u>
<u>INCOME</u>			
Carry Over from Previous Years	\$ 2,500.00	\$ 2,583.24	\$(83.24)
Endowment	126,000.00	120,402.16	5,597.84
Other	3,000.00	4,446.45	(1,446.45)
Rental	26,000.00	33,817.85	(7,817.85)
Assessment and Quota	172,996.00	172,683.00	313.00
Free Will Offering: Holy Nativity	-0-	1,006.00	(1,006.00)
Epiphany	-0-	2,000.00	(2,000.00)
	<hr/>	<hr/>	<hr/>
	\$ 330,496.00	\$ 336,938.70	\$(6,442.70)
<u>EXPENDITURES</u>			
<u>Part I</u>			
Diocesan Office	\$ 72,995.14	\$ 77,719.17	\$(4,724.03)
Episcopate	43,919.34	37,149.35	6,769.99
Auto Upkeep	1,000.00	1,380.54	(380.54)
Travel	2,500.00	1,684.33	815.67
Office Rent	6,000.00	6,000.00	-0-
Office Expenses	13,500.00	12,280.24	1,219.76
Property Maintenance	3,000.00	3,833.79	(833.79)
Property Taxes	1,500.00	1,405.49	94.51
Debt Retirement	2,400.00	2,400.00	-0-
Office - Canon to the Ordinary	1,000.00	767.43	232.57
	<hr/>	<hr/>	<hr/>
	\$ 147,814.48	\$ 144,620.34	\$ 3,194.14
<u>Part II</u>			
Pensions	\$ 4,700.00	\$ 4,700.00	\$ -0-
Clergy Relocation	2,500.00	-0-	2,500.00
National Church Quota	40,000.00	33,945.00	6,055.00
Province	2,000.00	700.00	1,300.00
General Convention Assessment	5,000.00	4,664.00	336.00
Deputy Travel	2,500.00	2,500.00	-0-
Seminarians	2,000.00	1,762.28	237.72
Convention Costs	2,000.00	1,183.26	816.74
Clergy Conferences	4,000.00	3,145.58	854.42
Meeting Costs	3,500.00	3,977.96	(477.96)
Retirement Fund (Lay Workers)	4,000.00	4,566.00	(566.00)
	<hr/>	<hr/>	<hr/>
	\$ 72,200.00	\$ 61,144.08	\$ 11,055.92
<u>Part III</u>			
Mission Subsidies	\$ 15,194.69	\$ 17,320.62	\$(2,125.93)
PIC Clergy Subsidies	21,595.66	21,744.07	(148.41)
Community College Minister	19,153.90	18,538.44	615.46
Youth Minister	17,914.78	13,930.62	3,984.16
Seabury Hall	7,578.00	7,590.61	(12.61)
New Clergy Training	11,215.49	11,438.55	(223.06)
Continuing Education	2,350.00	3,677.75	(1,327.75)
Contingent Fund	2,500.00	1,250.00	1,250.00
Programs: Stewardship	5,000.00	5,000.00	-0-
H E Y	2,000.00	1,500.00	500.00
Campership	-0-	-0-	500.00
Council of Churches	3,500.00	3,500.00	-0-
Chronicle	4,800.00	4,800.00	-0-
Palama Interchurch Council	1,550.00	1,550.00	-0-
Film Hui	150.00	150.00	-0-
Campus Ministry	2,200.00	2,900.00	(700.00)
Faith at Work	1,200.00	256.55	943.45
Dream Committee	1,000.00	-0-	1,000.00
C.O.V.H. (Visually Handicapped)	600.00	600.00	-0-
	<hr/>	<hr/>	<hr/>
	\$ 120,002.52	\$ 115,747.21	\$ 4,255.31
	<hr/>	<hr/>	<hr/>
	\$ 340,017.00	\$ 321,511.63	\$ 18,505.37
Surplus/(Deficit)	<hr/>	<hr/>	<hr/>
	\$ (9,521.00)	\$ 15,427.07	

ASSESSMENT AND QUOTA

	Accepted 1976
All Saints'	\$ 4,055.00
Calvary	5,917.00
Christ Church	3,325.00
Christ Memorial	577.00
Emmanuel	2,683.00
Epiphany	3,746.00
Good Samaritan	1,946.00
Good Shepherd	6,078.00
Good Shepherd, PIC	801.00
Grace Church	647.00
Holy Apostles'	2,987.00
Holy Cross	461.00
Holy Innocents'	3,686.00
Holy Nativity	18,258.00
Kohala Missions	1,089.00
Resurrection, PIC	474.00
St. Andrew's Cathedral	41,356.00
St. Barnabas'	2,905.00
St. Christopher's	13,639.00
St. Clement's	11,252.00
St. Columba's	392.00
St. Elizabeth's	8,183.00
St. George's	2,732.00
St. James, Kamuela	3,372.00
St. John's, Eleele	2,056.00
St. John's, Kula	2,157.00
St. John's By-The-Sea	1,311.00
St. Jude's	520.00
St. Luke's	3,509.00
St. Mark's	4,104.00
St. Mary's	4,747.00
St. Matthew's	690.00
St. Michael's	1,569.00
St. Paul's, Kekaha	826.00
St. Paul's, PIC	1,575.00
St. Peter's	10,608.00
St. Philip's	317.00
St. Stephen's	3,571.00
St. Thomas'	266.00
St. Timothy's	7,229.00
Trinity Church By-The-Sea	515.00
Waikiki Chapel	1,126.00
	<hr/>
	\$ 187,257.00
	<hr/> <hr/>

1976 PROPOSED BUDGET

INCOME

Carry Over from Previous Years	\$ 6,890.92
Endowment Income	126,000.00
Other Income	3,000.00
Rental Income	30,000.00
Assessment and Quota	187,257.00
Cotton Fund	3,600.00
	<hr/>
Total Income	\$ 356,747.92
	<hr/> <hr/>

EXPENDITURES

<u>Objective I - Outreach</u>	
National Church Quota	\$ 40,111.00
Provincial Quota	1,000.00
General Convention Assessment	5,000.00
Travel - Deputies General Convention	2,500.00
Hawaiian Church Chronicle	5,000.00
Ecumenical Officer	700.00
Camperships	500.00
Ministry to Hawaiian Community	15,837.84
	<hr/>
	\$ 70,648.84
	<hr/>
<u>Objective II - Nurture</u>	
Seminarians	\$ 1,000.00
Meeting Costs	3,500.00
Youth Ministry - Includes HEV	5,000.00
Continuing Education - Includes HMSA - Engelcke	5,000.00
Stewardship	3,500.00
Seabury Hall	7,575.00
Clergy Conferences	3,000.00
	<hr/>
	\$ 28,575.00
	<hr/>
<u>Objective III - Community Action</u>	
Community College Ministry	\$ 19,153.90
Council of Churches	3,500.00
Palama Interchurch Council	550.00
Campus Ministry	4,000.00
	<hr/>
	\$ 27,203.90
	<hr/>
<u>Objective IV - Church Extension and Development</u>	
Mission Subsidies: St. Philip's	\$ 4,314.40
St. Barnabas'	9,000.00
St. Michael's	10,046.61
St. John's, Kula	2,269.28
Trinity Church By-The-Sea	600.00
Hawaii - New Work	500.00
Filipino Clergy Salaries Subsidies: Maui	11,040.69
Hawaii	10,015.51
Oahu	12,871.94
	<hr/>
	\$ 60,458.43
	<hr/>
<u>Objective V - Administration and Property Management</u>	
Diocesan Office	\$ 72,410.43
Episcopate	45,751.32
Auto Upkeep	1,000.00
Travel	2,500.00
Office Rent	6,000.00
Office Expenses	14,000.00
Property Maintenance	3,000.00
Property Taxes	1,500.00
Debt Retirement	2,400.00
Office - Canon to the Ordinary	1,000.00
Pensions	6,300.00
Clergy Relocation	2,500.00
Convention Costs	2,000.00
Retirement Fund - Lay Workers	5,000.00
Contingent Fund	2,500.00
	<hr/>
	\$ 169,861.75
	<hr/>
Total Expenditures	\$ 356,747.92
	<hr/> <hr/>

1975 GIVING FOR WORK OUTSIDE PARISH

	P.B.F. for World Relief	P.B.F. for World Hunger	B.T.O.	C.S.M.O.	G.F.O.	Theo. Education	Misc.	Total
1. All Saints'			\$ 103.09	\$ 53.42	\$ 90.00	\$ 113.60	\$ 100.00	\$ 460.11
2. Calvary		\$ 1,359.13	95.18					1,454.31
3. Christ Church	10.00							10.00
4. Christ Memorial	96.00		35.25	33.52	30.50		81.84	277.11
5. Church of the Ascension	370.55							370.55
6. Emmanuel		502.00		300.00	50.00			2,012.00
7. Epiphany							500.00	2,029.43
8. Episcopal Church Women		50.00					2,029.43	50.00
9. Good Samaritan		1,608.75	167.18			508.00		3,204.73
10. Good Shepherd		55.00	11.00					66.00
11. Grace Church	348.77		36.68		105.53	200.00		905.98
12. Holy Apostles'							25.00	25.00
13. Holy Cross						50.00		1,993.70
14. Holy Innocents'	884.00	118.70						3,809.99
15. Holy Nativity	55.45	1,634.22	26.23	286.44	50.92		1,756.73	422.63
16. Iolani School		422.63						
17. Kohala Missions								
18. Resurrection, PIC	5.00				5.00	5.00		15.00
19. St. Andrew's Cathedral	63.65	119.00						293.05
20. St. Barnabas'	40.00	820.39	83.59			275.84		182.65
21. St. Christopher's	240.83	2,077.66				700.00	7.50	1,226.72
22. St. Clement's								3,018.49
23. St. Columba's								
24. St. Elizabeth's	759.95	238.00	105.45	177.79	177.20	318.45	49.95	1,666.79
25. St. George's	45.00		1.25			87.00	75.00	208.25
26. St. James, Kamae								
27. St. John's, Eleele						50.00		50.00
28. St. John's, Guam								519.51
29. St. John's, Kula								29.00
30. St. John's, By-The-Sea		50.00			39.36			89.36
31. St. Jude's								
32. St. Luke's		104.00	47.80				32.60	213.40
33. St. Mark's	200.00	500.00			29.00			783.00
34. St. Mary's	100.00	1,075.00	44.00	100.00	28.00	200.00		5,720.00
35. St. Matthew's		300.00					9.00	309.00
36. St. Michael's	200.00					4.00		414.00
37. St. Paul's, Kealahou								
38. St. Paul's, PIC								
39. St. Peter's	200.00				40.00	450.00	954.31	1,691.61
40. St. Philip's	113.00							113.00
41. St. Stephen's	205.47						184.56	390.03
42. St. Thomas'		573.75					13.00	17.80
43. Trinity Church							671.72	1,298.24
44. Waialeale Chapel		600.00						
45. Miscellaneous	125.00	493.55					100.00	700.00
46. Miscellaneous							1,039.96	1,658.51
Total	\$ 4,722.67	\$ 12,994.83	\$ 756.70	\$ 951.04	\$ 745.51	\$ 2,961.29	\$ 14,537.91	\$ 37,669.95

COOPERS & LYBRAND
CERTIFIED PUBLIC ACCOUNTANTS

IN PRINCIPAL AREAS
OF THE WORLD

The Board of Directors
The Episcopal Church in Hawaii

We have examined the balance sheet of The Episcopal Church in Hawaii as of December 31, 1975. Our examination was made in accordance with generally accepted auditing standards and accordingly included such tests of the accounting records and such other auditing procedures as we considered necessary in the circumstances. We previously examined and reported upon the balance sheet of the Church for the year ended December 31, 1974.

In our opinion, the aforementioned balance sheet presents fairly the financial position of The Episcopal Church in Hawaii at December 31, 1975 and 1974 in conformity with generally accepted accounting principles consistently applied during the period except for the change, with which we concur, in the method of carrying marketable securities held as trust investments as described in Note 2.

The data included in Schedules I, II and III of this report is presented primarily for supplemental analysis purposes. This information has been subjected to the same audit procedures applied in the examination of the balance sheet referred to above and, in our opinion, is fairly stated in all material respects in relation to the balance sheet taken as a whole, except that we did not substantiate the accuracy of the allocation of investment earnings as presented in Schedule II, and accordingly, we express no opinion thereon.

Coopers & Lybrand

Honolulu, Hawaii
March 19, 1976

THE EPISCOPAL CHURCH IN HAWAII

Balance sheet - December 31, 1975 and 1974

ASSETS

Cash, including savings account of \$98,849 in 1975 and \$102,012 in 1974
 Accounts receivable from parishes and missions
 Home loan receivable from clergy
 Episcopal Construction Fund loans receivable
 Advances in excess of Building Fund deposits
 Loan receivable from Holy Innocents Church
 Land held for resale
 Receivable from Investment Fund

	1975	1974	LIABILITIES AND FUND BALANCES	
			1975	1974
	\$ 115,748	\$ 146,400		
	136,803	129,365	\$ 142,897	\$ 142,897
	47,950	32,950	88,955	74,529
	26,698	23,098	32,772	32,772
	9,100	54,864	126,989	127,364
	47,339	47,339	16,269	35,534
	10,000	10,000	10,756	30,940
	25,000	-		
	\$ 418,638	\$ 444,036	\$ 418,638	\$ 444,036

GENERAL FUND

General Fund balances:
 Episcopal Construction Fund
 Building Fund
 Home Loan Fund
 Linberg-Revolving Fund
 PIC Social Hall Fund
 Sundry

Cash

Trust Investments:
 Marketable securities, carried at market quotations in 1975 and at cost in 1974 (Note 2)

Corporate bonds
 Common stock
 Preferred stock
 Short-term investments

Loans, mortgages, and agreements of sale

Special Investments

	1975	1974		1975	1974
	\$ 20,596	\$ 22,996	Payable to General Fund	\$ 25,000	\$ -
	1,574,643	1,900,094	Investment fund balances:		
	910,802	911,716	Trust endowments	2,794,087	3,260,764
	56,400	60,750			
	48,053	224,753	Special gifts and bequests	398,443	424,443
	2,589,908	3,097,313			
	183,583	140,455			
	2,773,491	3,237,768			
	423,443	424,443			
	\$3,217,530	\$3,685,207			

REAL ESTATE FUND

Land and buildings

Long-term notes payable (Note 3)
 Real Estate Fund balance

	\$7,418,391	\$7,444,371	\$ 600,838	\$ 608,588
	\$7,418,391	\$7,444,371	6,817,553	6,835,783
			\$7,418,391	\$7,444,371

The accompanying notes are an integral part of the balance sheet.

THE EPISCOPAL CHURCH IN HAWAII

Notes to Balance Sheet

1. Significant Accounting Policies

Accounts And Records -

The accounts and records of the Church do not reflect the financial position and results of operations of parishes, missions or institutions which conduct the activities of The Episcopal Church throughout the State of Hawaii. However, certain trusts of these departments are held by the Church and accordingly have been taken into account in the accompanying balance sheet.

The accounts of the Church are maintained in accordance with the principles of fund accounting in order to help ensure observance of restrictions and designations placed by donors and others on the use of the resources available to The Episcopal Church in Hawaii. In the accompanying balance sheet, funds that have similar characteristics have been combined into fund groups.

Description Of Fund Groups -

General Fund:

This fund accounts for contributions available for designated and general operations of the Church.

Investment Fund:

This fund accounts for contributions for which the donor has stipulated that the principal is to be invested in the Church investment pool or held in trust. The income is restricted for purposes designated by the donor.

Real Estate Fund:

This fund accounts for all known land, buildings and other properties of the Church.

Trust Investments -

The Church through its agent, Hawaiian Trust Co., Limited, maintains an investment pool on behalf of itself, parishes and missions.

THE EPISCOPAL CHURCH IN HAWAII

Notes to Balance Sheet

Trust investments in marketable securities are carried at market quotations at December 31, 1975 (see Note 2). Indicated market values were obtained from quotations close to or at year end. Trust investments in loans, mortgages and agreements of sale are carried at principal amount.

Income, which is distributed quarterly, is recorded when received. Realized and unrealized gains or losses from investments are treated as additions to or deductions from principal and accordingly have no effect on income available for distribution.

Special Investments -

Special investments are carried at cost, if purchased, or market quotations on the date of receipt of gifts. These investments are held in trust for special designations. Income realized is paid directly to the designee or donor, in the case of life interest.

Land And Buildings -

Title to all real property (other than real property of St. Clement's Church) is vested in The Episcopal Church in Hawaii; accordingly, such property is accounted for in the records of the Church. The carrying value of the property is frequently an estimated amount not readily subject to accurate determination, intended to represent expenditures made not only by the Church but also by missions, parishes or other persons.

In common with the practice of many similar nonprofit organizations, the Church does not provide for depreciation on buildings and other properties.

2. Change In Accounting Policy For Trust Investments

Effective as of December 31, 1975, the Church is carrying marketable securities held as trust investments at market quotations in order to

THE EPISCOPAL CHURCH IN HAWAII

Notes to Balance Sheet

reflect the approximate current value of such investments. In prior periods, marketable securities were carried at cost, if purchased, or market quotation on the date of receipt of gifts. The effect of this change was to reduce the carrying value of marketable securities and the Trust Endowment Fund Balance by \$514,360 at December 31, 1975.

At December 31, 1974, the carrying value of marketable securities exceeded market quotations by approximately \$765,000.

3. Notes Payable

Notes payable at December 31, 1975 and 1974 are shown below:

	<u>1975</u>	<u>1974</u>
First Hawaiian Bank -		
Mortgages:		
Emmanuel Church - 5½%, payable \$143 monthly including interest, due 1990.	\$ 13,847	\$ 14,346
St. Andrew's Cathedral - 6¼%, payable \$225 monthly including interest, due 1990.	2,254	4,713
Unsecured:		
St. Timothy's -		
7¾%, payable on demand, due 1977.	229,818	229,818
10¾%, payable on demand.	-	9,250
Calvary - 7¾%, payable \$1,445 monthly including interest, due 1988.	144,275	149,699
Kona Property - 7¾%, payable \$582 monthly including interest, due 1982.	61,320	62,983
Holy Innocents - 7¾%, payable \$630 monthly including interest, due 1983.	39,547	43,569
Emmanuel Church - 7¾%, payable \$499 monthly including interest, due 1978.	38,249	-
St. Christopher's - 6½%, payable \$150 monthly including interest, due 1997.	13,720	21,273
Holy Nativity - 7¾%, payable \$203 monthly including interest, due 1983.	12,196	13,520
St. Michael's - 7¾%, payable \$155 monthly including interest, due 1983.	9,918	10,880
Papai Street - 6½%, payable \$150 monthly including interest, due 1977.	2,300	4,470
St. George's - 10¾%, payable \$92 monthly including interest.	-	1,207
	<u>567,444</u>	<u>565,728</u>

THE EPISCOPAL CHURCH IN HAWAII
Notes to Balance Sheet

	1975	1974
Bank of Hawaii -		
Unsecured:		
St. Stephen's - 9½%, payable \$4,000 annually including interest, due 1980.	\$ 17,777	\$ 21,904
St. Mary's - 12%, payable \$426 monthly including interest.	-	3,006
	<u>17,777</u>	<u>24,910</u>
Executive Council - unsecured - St. Matthew's - payable \$2,000 annually, noninterest bearing.	5,700	5,700
State of Hawaii - collateralized by property - Epiphany Parish - 6%, payable \$583 quarterly plus interest, due 1980.	9,917	12,250
	<u>\$600,838</u>	<u>\$608,588</u>

Interest rates for certain of the above notes are based upon the bank's prime interest rate and fluctuate during the year.

Schedule I

THE EPISCOPAL CHURCH IN HAWAII

Trust Investments
December 31, 1975

	Maturity	Principal amount or number of shares	Cost	Market quotation	1975 dividends and interest
<u>Marketable securities</u>					
<u>Corporate bonds</u>					
Addressograph Multigraph, 9.375%	1995	\$100,000	\$ 103,527	\$ 78,500	\$ 9,375
American Financial System, Inc., 9.25%	1976	32,000	32,080	31,680	4,959
Burlington Northern, Inc., 8.50%	1996	100,000	100,276	89,500	8,500
Consolidated Edison of New York, 7.75%	2003	200,000	195,266	132,250	15,500
Continental Telephone Company of California, 8.00%	1995	195,000	55,877	40,813	4,000
Dillingham Corporation, 9.75%	1985	125,000	128,296	126,250	12,188
Duke Power Company, 8.50%	2000	200,000	200,276	178,250	17,000
Walter Heller and Company, 9.50%	1989	50,000	50,125	48,500	4,750
Jersey Central Power & Light Corporation, 8.125%	2001	100,000	102,402	77,000	8,125
Kansas-Nebraska Natural Gas, 8.45%	1991	98,000	98,265	90,650	8,366
Michigan-Wisconsin Pipeline Company, 7.625%	1992	100,000	109,652	83,375	7,625
Northern Natural Gas Company, 8.00%	1991	200,000	205,089	178,000	16,000
Ohio Power Company, 8.375%	2003	200,000	199,036	155,500	16,750
Pacific Power & Light Company, 7.75%	2002	100,000	100,151	75,625	7,750
Southern Central Bell Telephone Company, 8.25%	2013	200,000	199,279	188,750	16,500
			<u>1,865,007</u>	<u>1,574,643</u>	<u>157,388</u>
<u>Common stock</u>					
American Telephone & Telegraph Company		1,500	77,270	76,313	1,275
Baltimore Gas and Electric Company		2,000	56,173	44,500	3,920
Bethlehem Steel Corporation		1,400	50,865	46,025	1,400
CFS Continental, Inc.		2,000	33,054	31,000	120
CPC International, Inc.		3,000	97,274	127,125	6,210
Columbia Gas System		3,525	105,988	80,634	7,262
Exxon Corporation		500	42,756	44,375	1,500
General Telephone and Electronics Corporation		3,000	76,077	76,125	1,350
INA Corporation		1,000	38,772	35,125	1,050
International Business Machines Corporation		125	42,382	28,031	813
Pacific Resources, Inc.		15,610	178,466	97,563	2,524
Realty and Mortgage Investors of the Pacific		8,261	170,519	64,023	9,913
Standard Oil Company of Indiana		200	8,498	8,525	300
Wisconsin Electric Power Company		4,000	92,425	116,000	7,600
Zenith Radio Corporation		1,500	59,969	35,438	1,500
Sold during the year				-	293
			<u>1,130,448</u>	<u>910,802</u>	<u>47,030</u>
<u>Preferred stock</u>					
Public Service Electric and Gas, 9.62%, cumulative		600	60,750	56,400	5,772
<u>Short-term investments</u>					
General Telephone & Electronics open-end notes		\$ 35,000	35,000	35,000	9,131
Amfac Financial Corp. - passbook savings		13,063	13,063	13,063	2,010
Sold during the year			-	-	1,467
			<u>48,063</u>	<u>48,063</u>	<u>12,608</u>
Total marketable securities			\$3,104,266	\$2,589,908	\$222,798

THE EPISCOPAL CHURCH IN HAWAII

Trust Investments
December 31, 1975

<u>Loans, mortgages and agreements of sale</u>	<u>Principal balance</u>	<u>1975 dividends and interest</u>
Ralph E. and Frances D. Adams, 7%	\$ 5,096	\$ 368
Henry Tai Hoong and Eunice Wang Chang, 6½%	16,592	1,148
Wayne M. and Phyllis S. Gocke, 6%	26,566	1,623
James G. and Dorothy D. S. Harrison, 9¾%	51,774	5,157
John J. and Doris J. O'Brien, 8½%	54,500	1,350
Charles J. Pietsch, Jr. and Fern L. Pietsch, 6½%	29,055	2,112
Total loans, mortgages and agreements of sale	<u>183,583</u>	<u>11,758</u>
Total marketable securities at market quotation	<u>2,589,908</u>	<u>222,798</u>
Total	<u>\$2,773,491</u>	<u>\$234,556</u>

Distribution of income

Undistributed income, December 31, 1974	\$ 16,313
Dividend and interest income - 1975 as above	<u>234,556</u>
	250,869
Agent's service charge	<u>7,607</u>
Income available for distribution	243,262
Distributed:	
Cash paid trust endowers	\$221,984
Retained in Trust Endowment Funds	<u>7,762</u>
	229,746
Undistributed income, December 31, 1975	<u>\$ 13,516</u>

THE EPISCOPAL CHURCH IN HAWAII

Trust Investments
December 31, 1975

A summary of investment transactions during 1975 follows:

	<u>Principal amount or number of shares</u>	<u>Cost</u>
ADDITIONS:		
Purchases -		
Common stock:		
American Telephone & Telegraph Company	1,500	\$ 77,269
Bethlehem Steel Corporation	1,400	50,865
Exxon Corporation	500	42,756
General Telephone and Electronics Corporation	3,000	76,077
INA Corporation	1,000	38,772
Standard Oil Company of Indiana	200	8,498
Agreement of sale	-	54,500
Stock dividends -		
Pacific Resources, Inc.	986	-
		<u>348,737</u>
DEDUCTIONS:		
Sales -		
Corporate bonds:		
American Financial System, Inc., 9.25%	34,000	34,085
Kansas-Nebraska Natural Gas, 8.45%	1,000	1,002
Common stock:		
Gulf Oil Corp.	296	6,801
Minnesota Mining & Manufacturing	500	43,040
Pacific Resources, Inc.	2,201	25,665
Short-term investments:		
General Telephone & Electronics open-end notes, net		176,000
Amfac Financial Corp. - passbook savings, net		690
Collections on loans, mortgages and agreements of sale		<u>11,371</u>
		<u>298,654</u>
Increase in trust investments at cost		50,083
Unrealized depreciation on investment securities (Note 2)		<u>514,360</u>
Decrease in trust investments		<u>\$464,277</u>

THE EPISCOPAL CHURCH IN HAWAII

Schedule II

Schedule of Trust Endowments
for the year ended December 31, 1975

	Balance December 31, 1974	Invested earnings	Receipts of principal	Disbursements	Balance December 31, 1975
<u>All Saints Church, Kapaa</u>					
Albert Horner - Organ Maintenance Fund	\$ 1,799	\$ 140	\$ -	\$ 140	\$ 1,799
Clergy Children Education Fund	-	41	1,000	41	1,000
Emma Lyman Wilcox Memorial Fund	25,000	6,385	-	6,385	25,000
Etta Wilcox Slogget Memorial	3,000	765	-	765	3,000
Henry Willey Columbarium	2,555	215	-	215	2,555
Willey Memorial Fund	20,000	1,547	-	1,547	20,000
<u>Christ Church, Kealahou, Kona</u>					
David Douglas Wallace Memorial Fund	33,604	2,866	-	2,866	33,604
E. C. Greenwell Fund	27,102	4,534	-	4,534	27,102
Ellen Hall Fund	9,583	1,628	-	1,628	9,583
<u>Church of the Holy Apostle, Hilo, Hawaii</u>					
Joseph D. Clark Young People's Fund	1,696	135	25	135	1,721
Clergy Supply Fund	1,355	175	-	175	1,355
Martha E. Wakefield Memorial Vicarage Fund	4,385	944	-	-	5,329
Auto Replacement	2,400	164	-	-	2,400
Church Day School Special Fund	4,792	311	-	311	4,792
Church Program Fund	11,493	746	-	746	11,493
<u>Epiphany Church</u>					
Candle Fund	1,100	112	-	112	1,100
Wilfred Richardson Memorial Flower Fund	600	35	-	35	600
Sophia Taylor Memorial Alter Guild Fund	1,000	80	-	80	1,000
<u>St. Andrew's Cathedral</u>					
Anderson Memorial Fountain	5,928	641	-	641	5,928
William Armitage Carlisle, Jr. Memorial Fund	4,767	351	-	-	5,118
Candle Fund	2,000	510	-	510	2,000
Chimes Fund	270	29	-	-	299
Choir	5,000	1,277	-	1,277	5,000
The Deanery	1,050	269	-	269	1,050
General Endowment Fund	234,820	24,635	1,000	24,635	235,820
Abbie Green Memorial	696	77	-	-	773
Guild & Auxiliary	15,000	3,830	-	3,830	15,000
Iolani Guild Scholarship Fund	32,000	1,900	-	1,900	32,000
Living Endowment for Clergy Salaries, Music & Christian Education	13,455	989	-	-	14,444
Maintenance & Renovation Fund	9,787	3,772	-	3,772	9,787
Memorial Building	16,000	3,722	-	3,722	16,000
Organist	5,200	1,327	-	1,327	5,200
L. Tenney Peck Memorial Fund	1,435	367	-	367	1,435
Mary E. Soper Memorial Fund	692	77	-	-	769
Young Memorial	13,000	2,744	-	2,744	13,000

Schedule II
(Cont'd.)

THE EPISCOPAL CHURCH IN HAWAII

Schedule of Trust Endowments
for the year ended December 31, 1975

	Balance December 31, 1974	Invested earnings	Receipts of principal	Disbursements	Balance December 31, 1975
<u>St. Andrew's Priory</u>					
St. Andrew's Priory	\$ 36,725	\$ 8,664	\$ -	\$ 8,664	\$ 36,725
Queen Emma Scholarship Fund	25,000	1,778	-	1,778	25,000
Sister Evelyn Scholarship Fund	6,603	522	-	522	6,603
Scholarship Fund	25,374	2,031	-	-	27,405
<u>St. Clement's Parish</u>					
Brodhead Memorial Fund	12,944	1,401	-	1,741	12,604
Chapel of Peace Maintenance Fund	22,185	2,971	-	2,971	22,185
General Endowment & Property Fund	152,088	14,415	-	14,415	152,088
Rectory Housing Fund	100,000	6,156	-	6,156	100,000
<u>Waikiki Chapel</u>					
Eloise J. Midkiff Memorial Fund	310	23	-	23	310
Lt. Clifton B. Robertson, Jr. Memorial Fund	1,754	119	-	119	1,754
<u>Other Divisions</u>					
Bishop's Discretionary Fund	4,078	390	1,000	390	5,078
Brodhead Fund to Partly Subsidize St. Clement's Parish Social Adult Education Fund	57,266	3,644	-	3,942	56,968
Church of the Holy Nativity Endowment Fund	10,000	650	-	650	10,000
Cluett Memorial Endowment Fund	20,500	5,236	-	5,236	20,500
Diocesan Development Fund	74,833	4,413	-	4,413	74,833
Diocesan General Maintenance	7,850	1,006	-	1,006	7,850
Episcopate Endowment	1,044,249	97,882	58,364	96,532	1,103,963
The Episcopal Churchwomen of Hawaii	200	51	-	51	200
The William S. & Nancy B. Fraser Memorial Fund	5,000	307	-	307	5,000
E. Lani Hanchett Memorial Mission Trust Fund	-	-	1,800	-	1,800
Hawaiian Church Chronicle	1,601	175	-	-	1,776
Holy Innocents Church - Lahaina	3,110	674	-	674	3,110
Honokaa Cemetery	567	140	-	140	567
Thomas Dowell Phillips Memorial Pension Fund	27,615	3,264	-	3,264	27,615
1001 Wilder Avenue Maintenance Fund	19,441	1,322	-	1,322	19,441
St. Augustine Churchyard	10,446	1,162	-	-	11,608
St. Christopher's Church	4,700	332	-	332	4,700
St. Elizabeth's Endowment Fund	10,000	1,165	10,000	1,165	20,000
St. George's Church Permanent Endowment Fund	1,233	89	-	-	1,322
St. James', Papaaloa - Eliza K. Spencer Memorial Fund	800	103	600	103	1,400
St. John's Church - Kula, Maui - Discretionary Fund	3,981	566	-	566	3,981
St. John's Episcopal School - Building Replacement Fund	388	29	-	-	417
St. Peter's Church Endowment Fund	15,701	1,163	1,158	1,163	16,859

THE EPISCOPAL CHURCH IN HAWAII

Schedule of Trust Endowments
for the year ended December 31, 1975

	Balance December 31, 1974	Invested earnings	Receipts of Principals	Disbursements	Balance December 31, 1975
St. Stephen's Building Fund	\$ 865	\$ 148	\$ -	\$ -	\$ 1,013
Seabury Hall - Scholarship Fund	1,906	103	2,500	4,509	-
Seabury Hall - Alumnae Scholarship Fund	1,182	312	1,126	-	2,620
*Realized gains (losses) on investment securities sold, net	1,021,392	-	(30,812)	-	990,580
Undistributed income to be allocated	<u>16,313</u>	<u>(2,797)</u>	-	-	<u>13,516</u>
	\$3,260,764	\$226,949	\$ 47,761	\$227,027	3,308,447
Unrealized depreciation on investment securities (Note 2)				<u>(514,360)</u>	
					<u>\$2,794,087</u>

* Does not share in allocation of investment income.

THE EPISCOPAL CHURCH IN HAWAII

Special Investments
December 31, 1975

<u>Number of shares</u>	<u>Common stock</u>	<u>Cost or carrying value</u>
100	Dean Witter & Co., Incorporated	\$ 2,300
92	Hawaiian Electric Company, Inc.	3,003
4,150	Kona Properties, Inc., Class B	336,600
700	Leverage Fund of Boston	10,500
40	Exxon Corporation	<u>3,540</u>
		<u>355,943</u>
	<u>Others</u>	
	American Financial System, note, 9½%	2,000
	Captain Cooke commemorative half dollar coins	500
	Municipal bonds, 5%	15,000
	Receivable from Space Investments, Inc., unsecured	<u>50,000</u>
		<u>67,500</u>
		<u>\$423,443</u>

ORGANIZATION OF THE EPISCOPAL CHURCH

Presiding Bishop: THE MOST REV. JOHN M. ALLIN, D.D.
Episcopal Church Office: 815 Second Avenue
New York, N.Y. 10017
P.B.'s Official Seat: National Cathedral Church of SS. Peter & Paul
Washington, D.C.
Province VIII, President: THE RT. REV. KILMER MYERS
Diocese of California

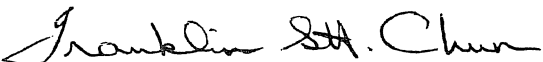
DIRECTORY FOR THE EPISCOPAL CHURCH, HAWAII

Bishop, Retired: THE RT. REV. HARRY S. KENNEDY
Canon to the Ordinary: THE REV. JAMES G. LONG
Treasurer: MR. HENRY F. BUDD
Chancellor: MR. JAMES H. TABOR
Historian: THE REV. KENNETH D. PERKINS
"Hawaiian Church Chronicle": MR. HENRY L. ULLMAN, Editor
Secretary, to the Diocesan: MRS. ALICE M. MAMIYA
Secretary, to the Treasurer: MRS. NANCY T. MINUTH
Clerk: MISS RUBY NAKAMURA
Dean, St. Andrew's Cathedral: THE VERY REV. HERBERT N. CONLEY
Episcopal Church Women: MRS. RICHARD T. (RAY ELIZABETH) HERKNER, President
Altar Guild: MRS. RAYMOND (HANNAH) CHING
Church Periodical Club: MRS. STANLEY (MARTHA) HO
Christian Social Relations: MRS. DAVID (CAROL) CAMP
United Thank Offering: MRS. RUSSELL (MARGE) JARED
Hawaii Episcopal Youth (MISS ANN LUCAS;) THE REV. BRIAN J. GRIEVES
Headmaster, Iolani School: THE REV. DAVID P. COON
Headmaster, St. Andrew's Priory: THE REV. FRED G. MINUTH
Headmaster, Seabury Hall, Maui: THE REV. ROGER M. MELROSE
Conference Center, "Camp Mokuieia"
"Camp PECUSA", Lahaina, Maui THE REV. FRANK M. GRAY
St. James' Conference Center THE REV. CHARLES S. BURGER
THE REV. GUY H. PILTZ

Lent 1976

In accordance with Episcopal Church Canon (I,1.1c;
5.3a) and Diocesan Canon (III,2); and through
requests, and also through mutual exchanges, we
submit to you our recently printed 7th Annual
Diocesan Convention Journal.

Aloha!


The Rev. Franklin Seu Hook Chun
Secretary, Diocesan Convention

*The Photographic Essay on Bishop Hanchett was prepared
by the Rev. John Paul Engelage. Photographs were from
the photo-scrapbook of Mrs. Hanchett and family.*

The next Meeting
(the 8th Annual Diocesan Convention)

is scheduled for November 5 - 7, 1976
in Honolulu, Hawaii,

at St. Andrew's Cathedral
and St. Andrew's Priory School